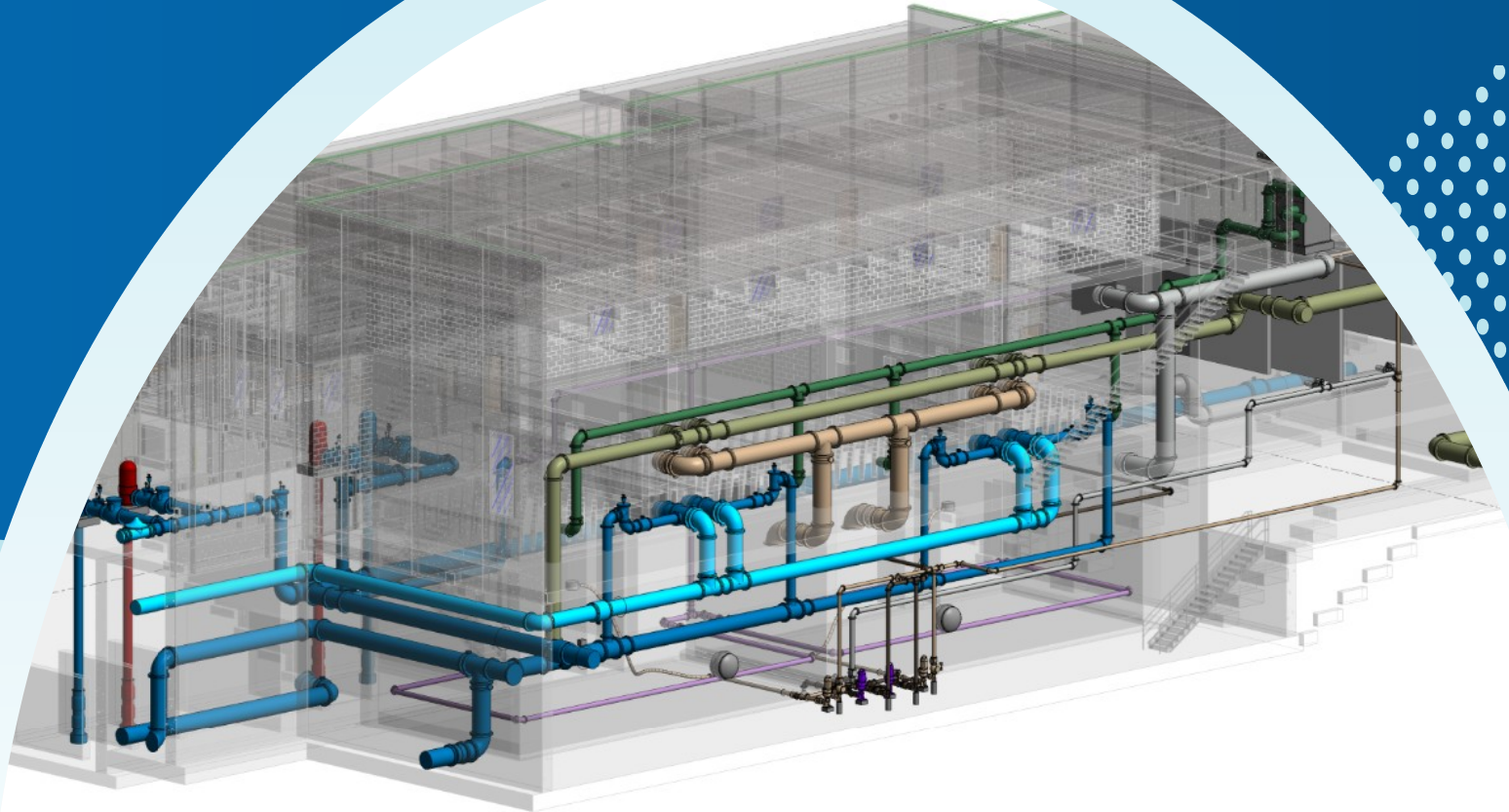


Monticello Water Supply Treatment Plant Progress Update

City Council Meeting | January 26th, 2026



Presentation Team



Ursinio Puga, PE
Project Manager
AE2S



Andrew Cooper, AIA
Architect of Record
Oertel Architects



Sherri Leonard
Director of Collaborative Delivery
Rice Lake Construction Group



A decorative background on the left side of the slide featuring a close-up of water splashing, with bubbles and droplets in shades of light blue and white. The right side of the slide is a solid dark blue color.

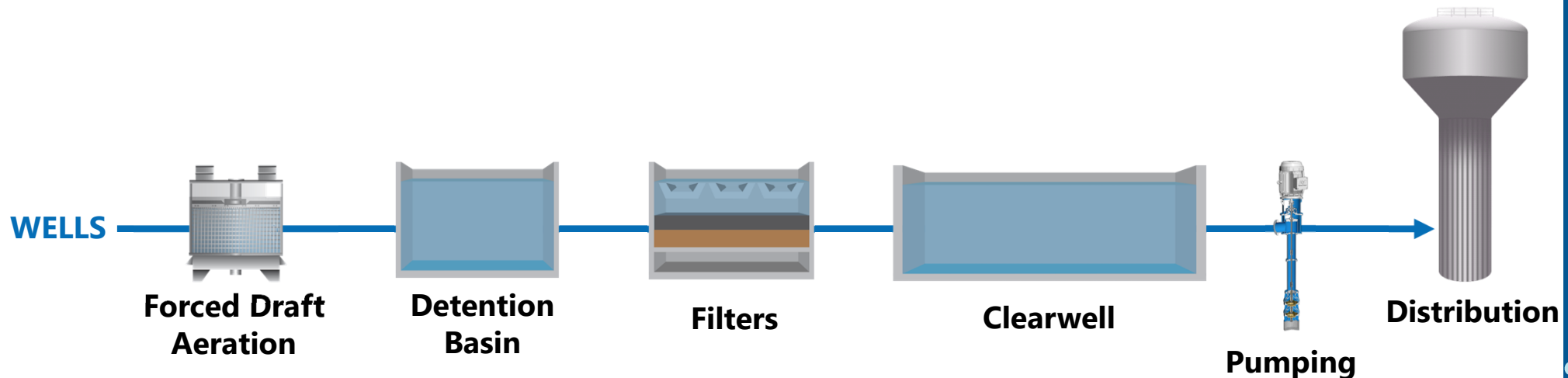
Outline

- Design Update
- Design Schedule Update
- Construction Cost Review
- Procurement Timeline
- Funding Update

DESIGN UPDATE

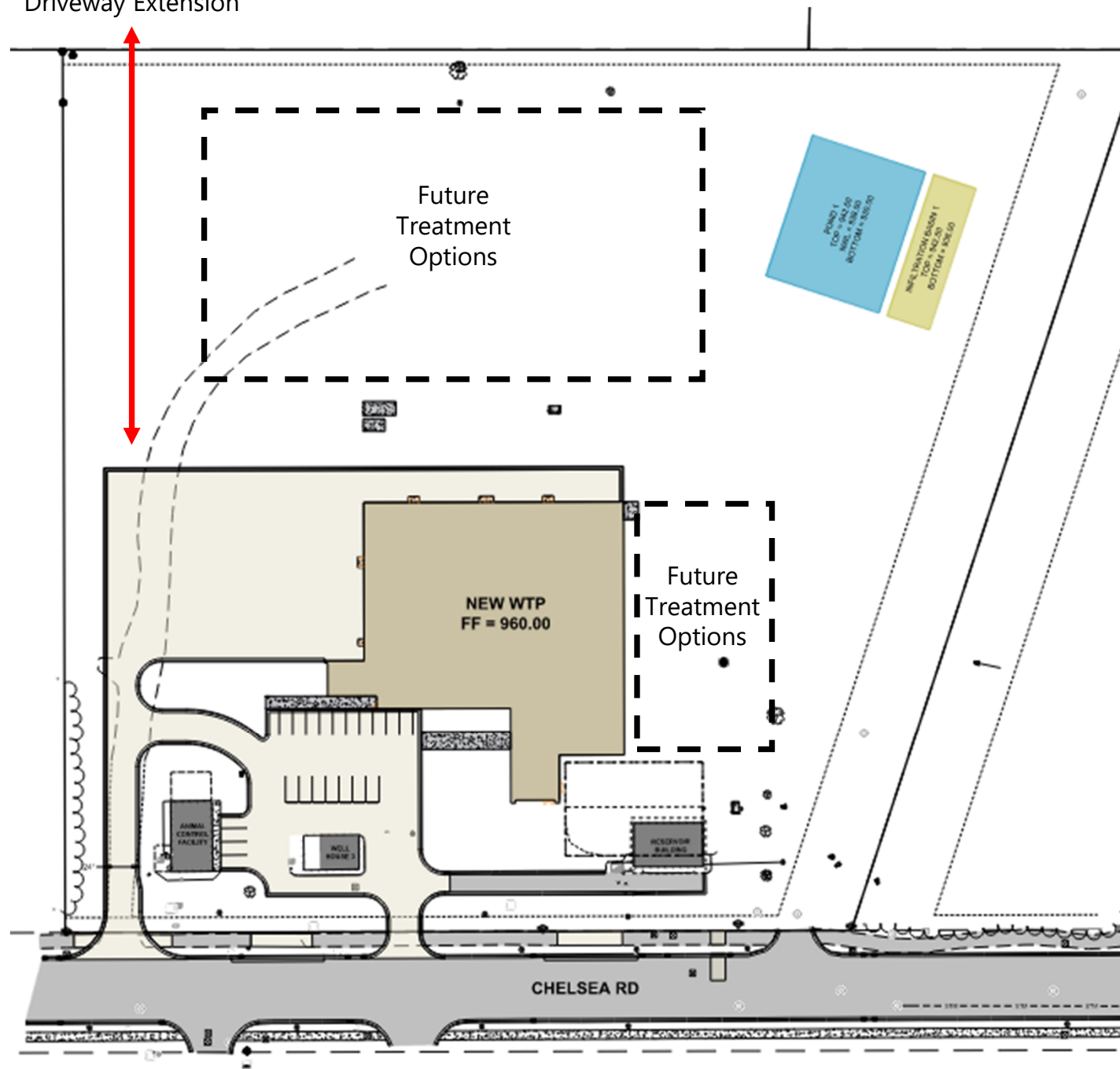
Design Decisions Summary

- **Total Capacity:** 8 MGD (ultimate: 16 MGD)
- **Firm Capacity:** 6 MGD (ultimate: 14 MGD)
- **Treatment Train:**

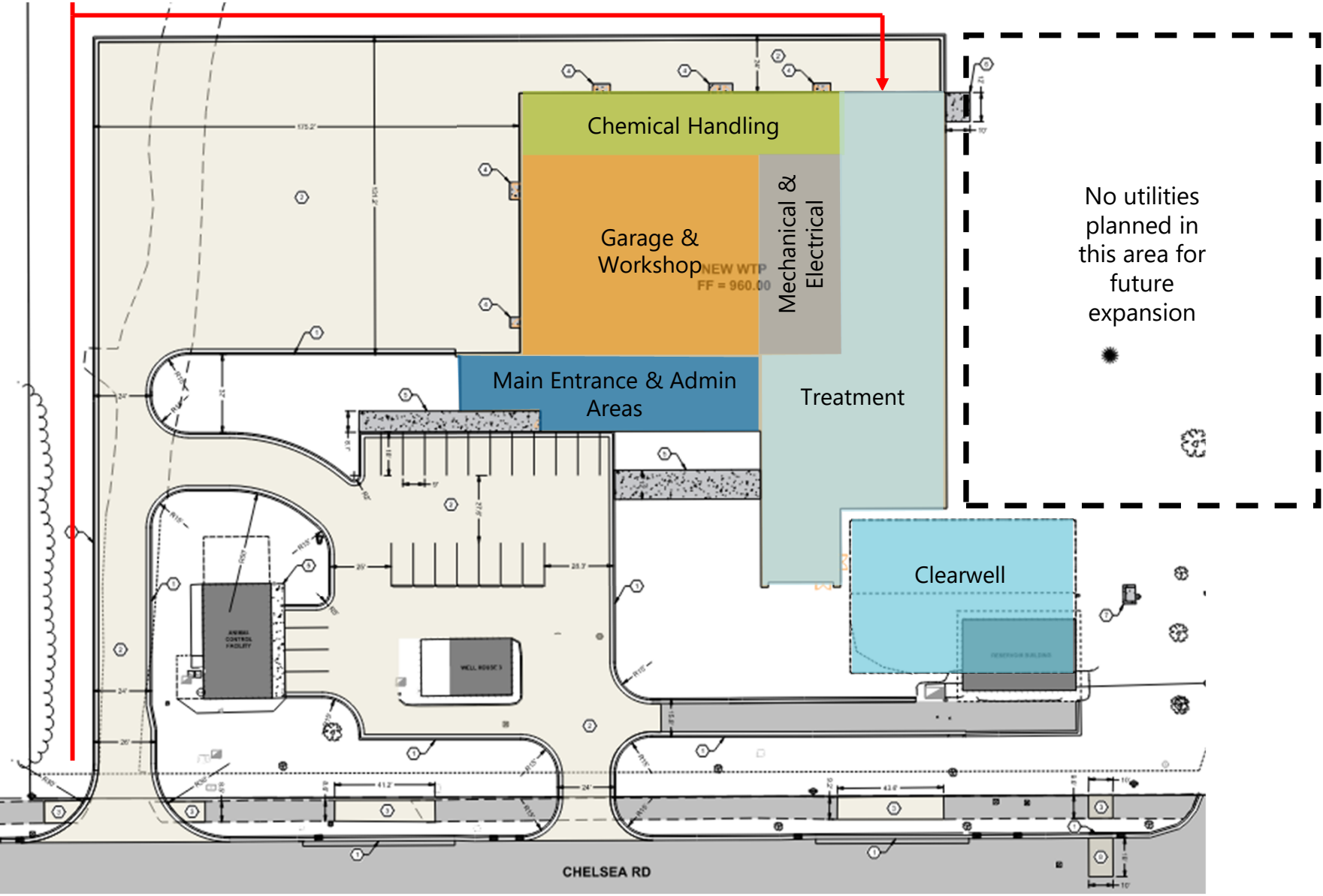


Site Layout

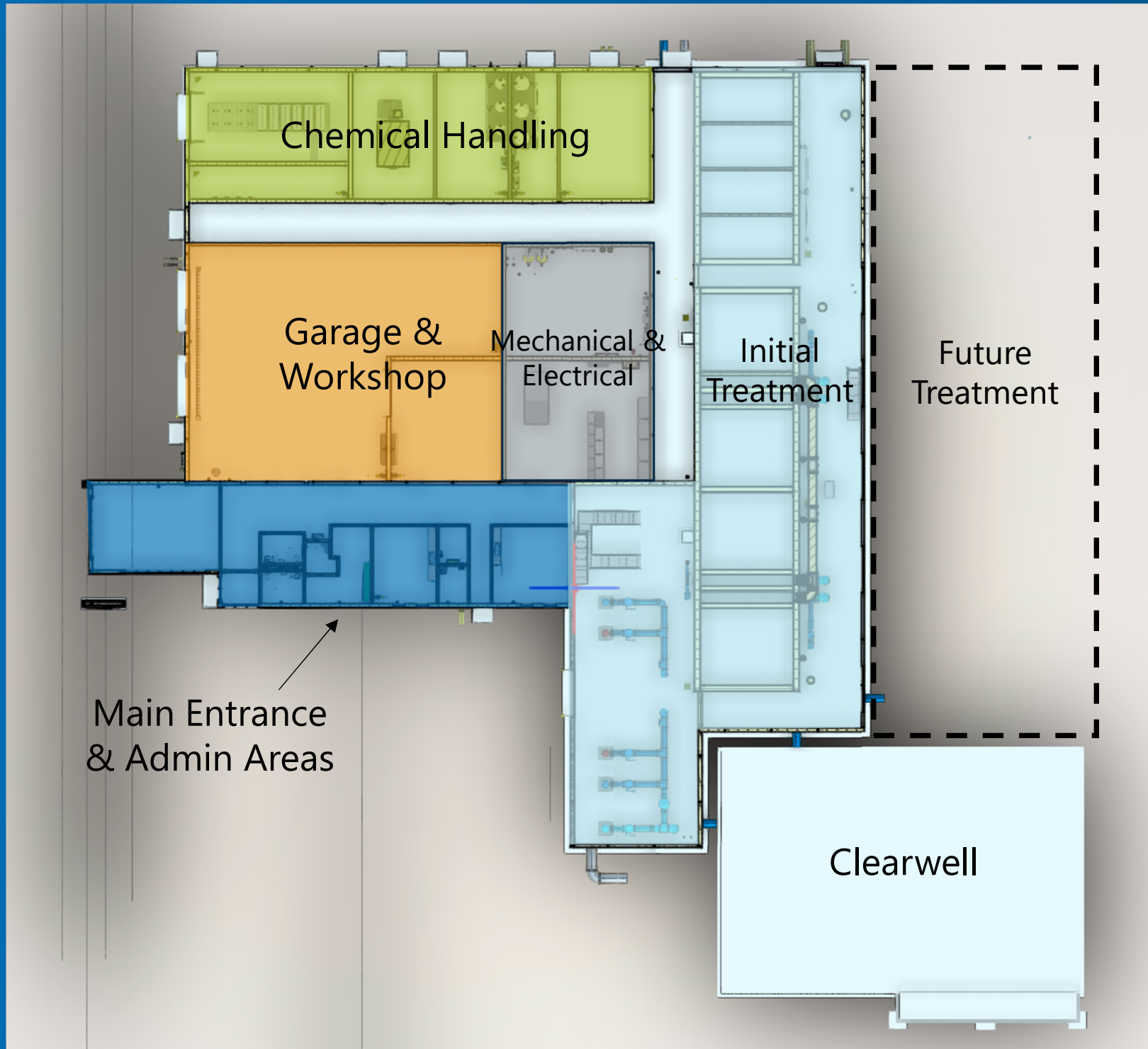
Future Potential
Driveway Extension



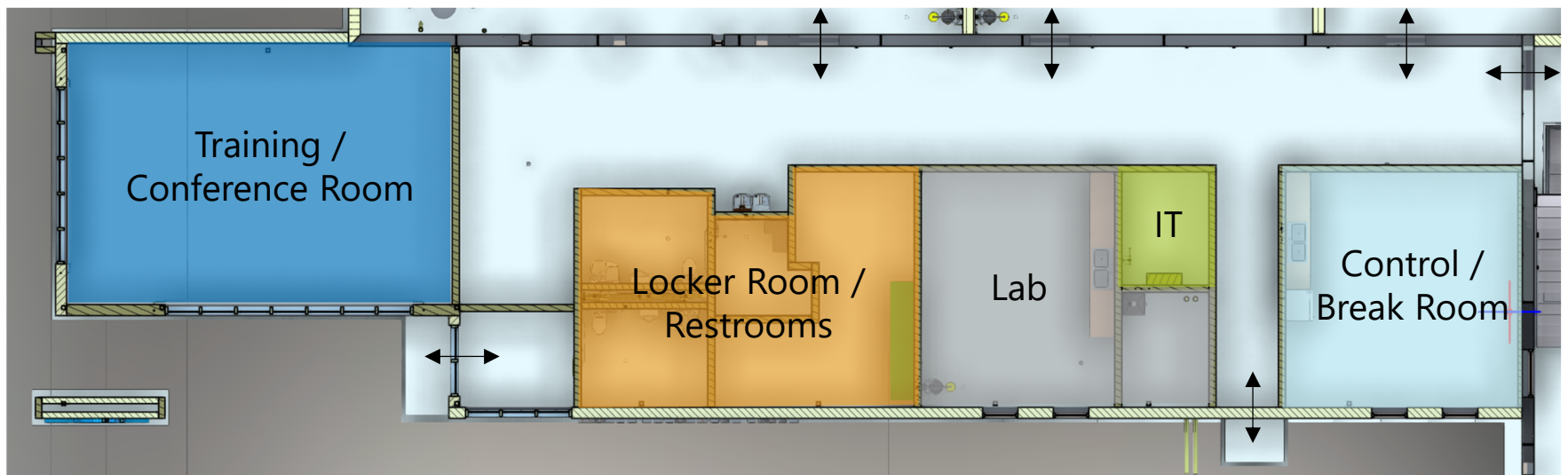
Site Plan



No utilities planned in this area for future expansion

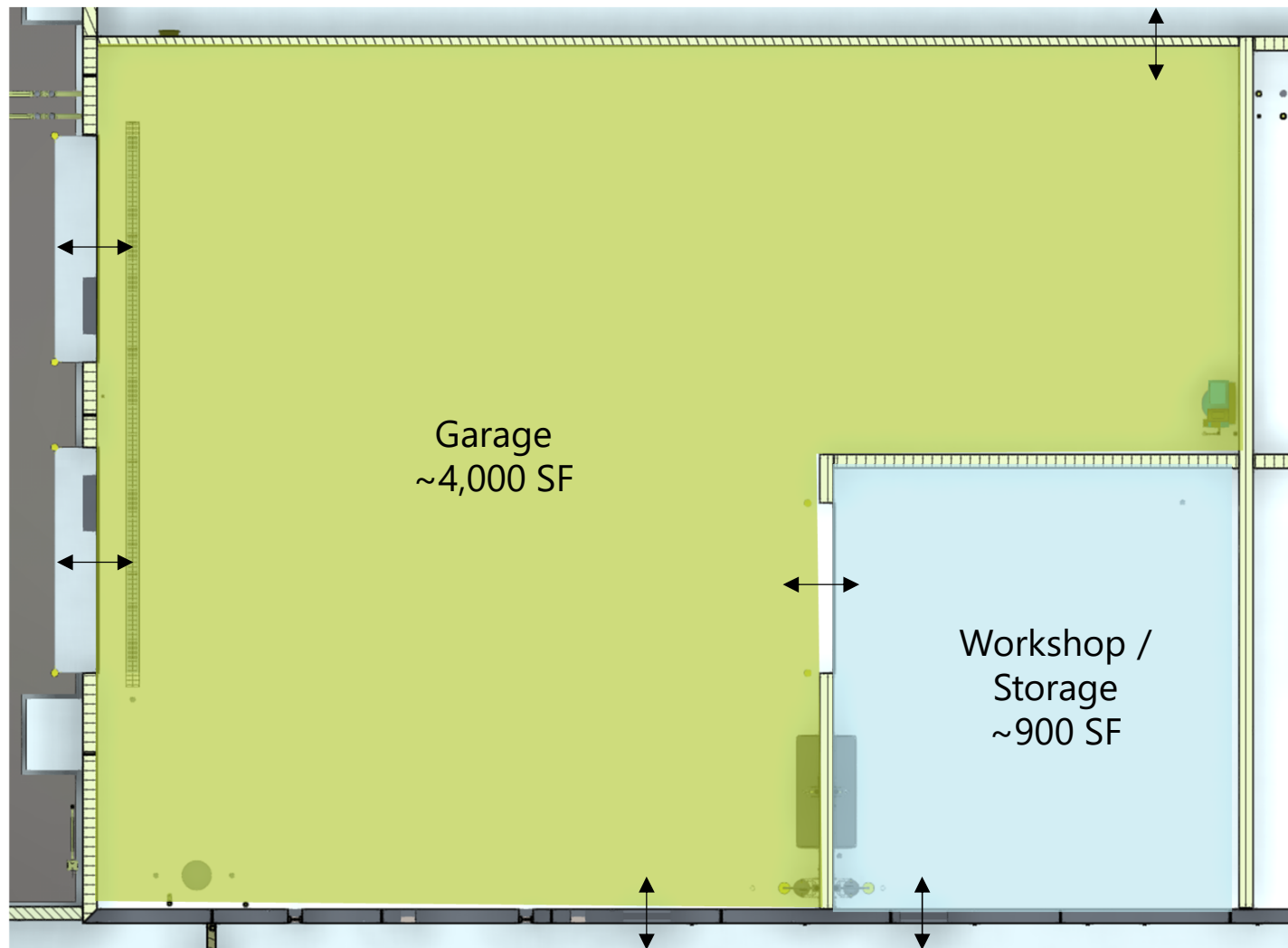


Entrance and Admin Areas

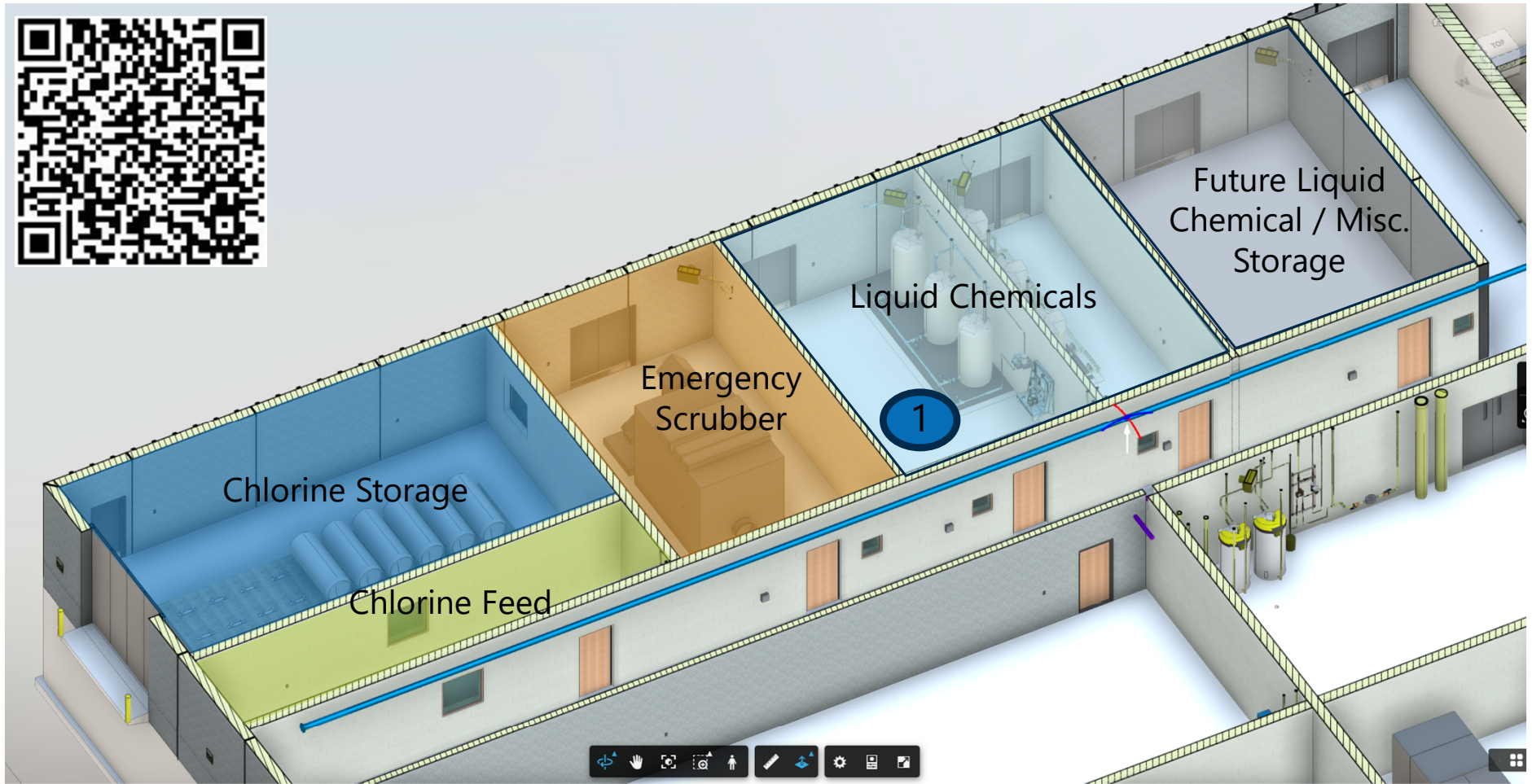


Approx. 3,400 SF including hallways

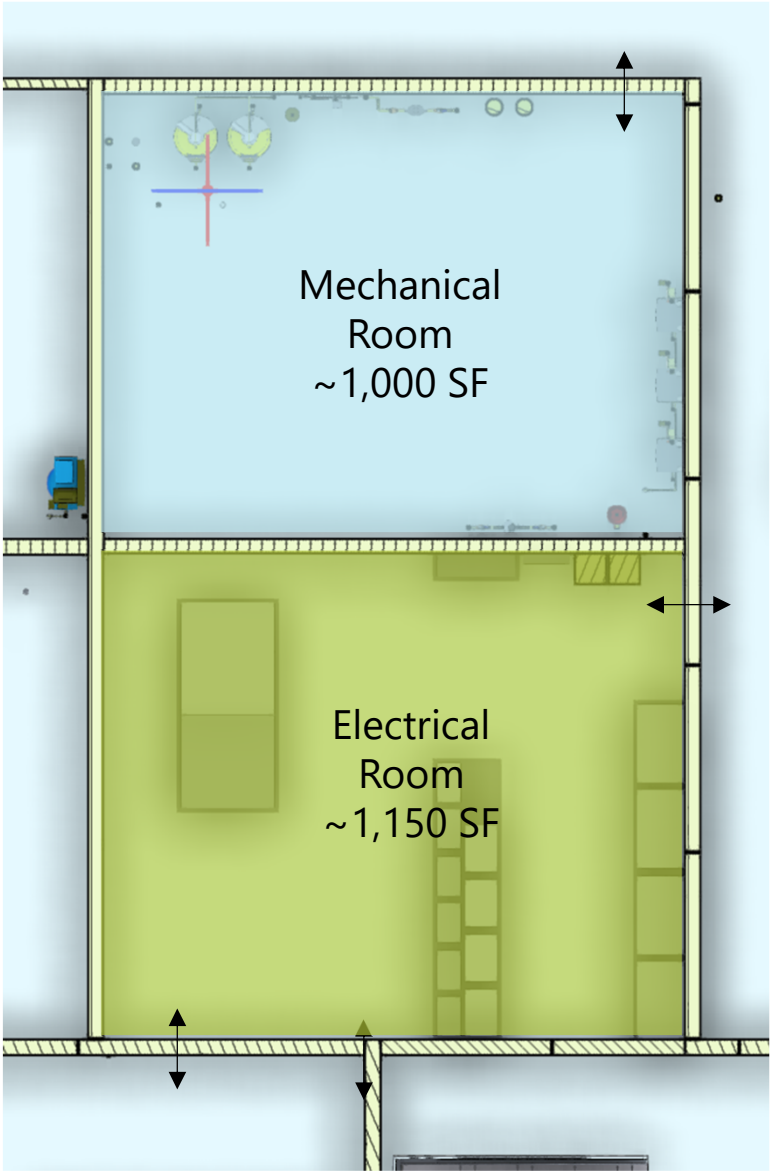
Garage & Workshop



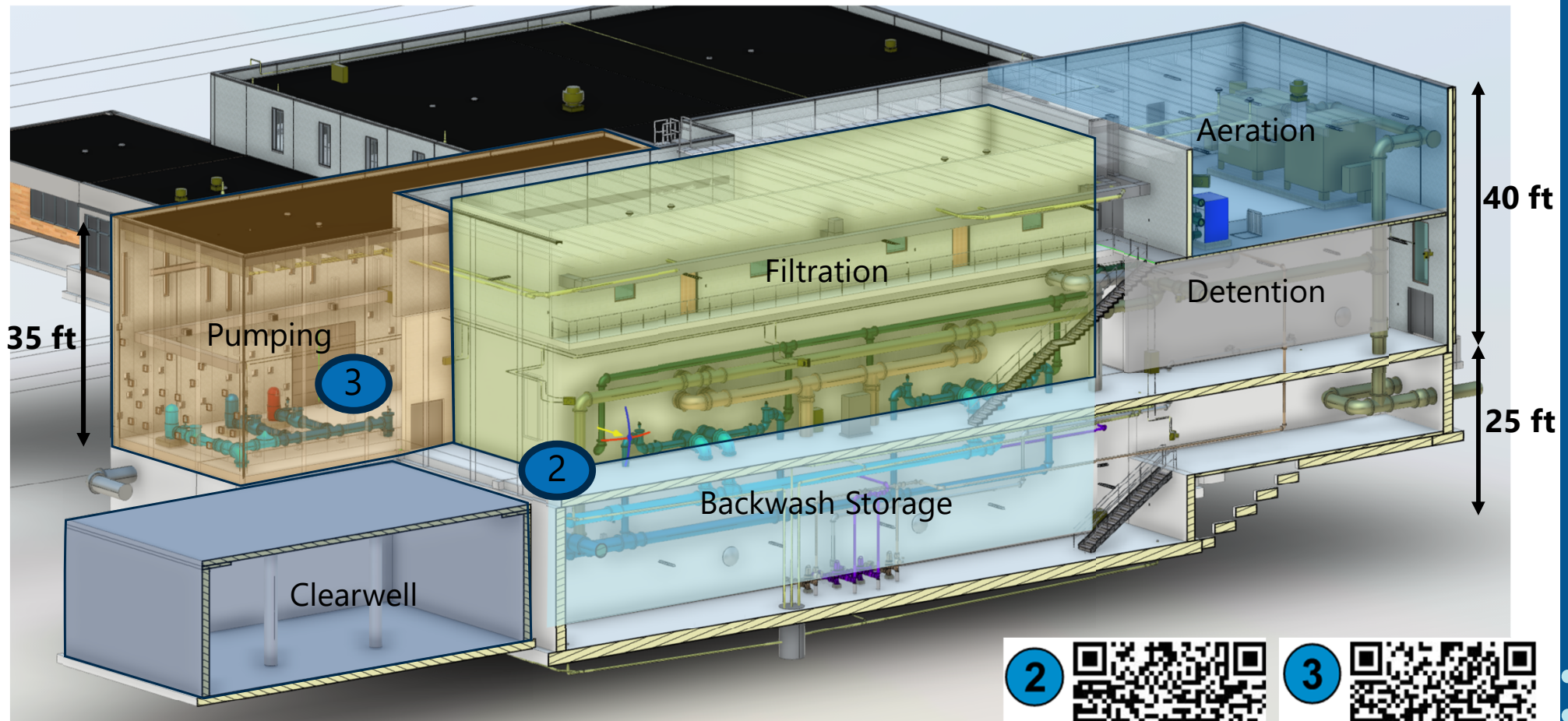
Chemical Handling



Electrical and Mechanical Rooms



Initial Treatment



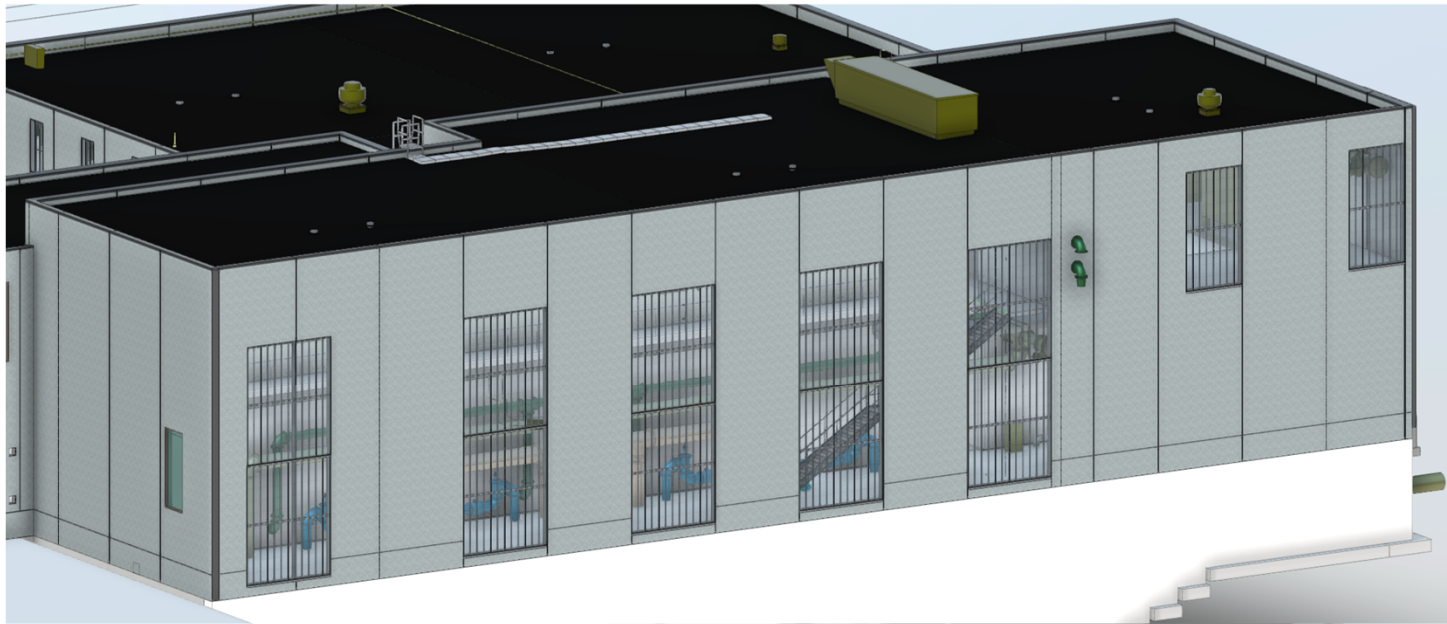
2



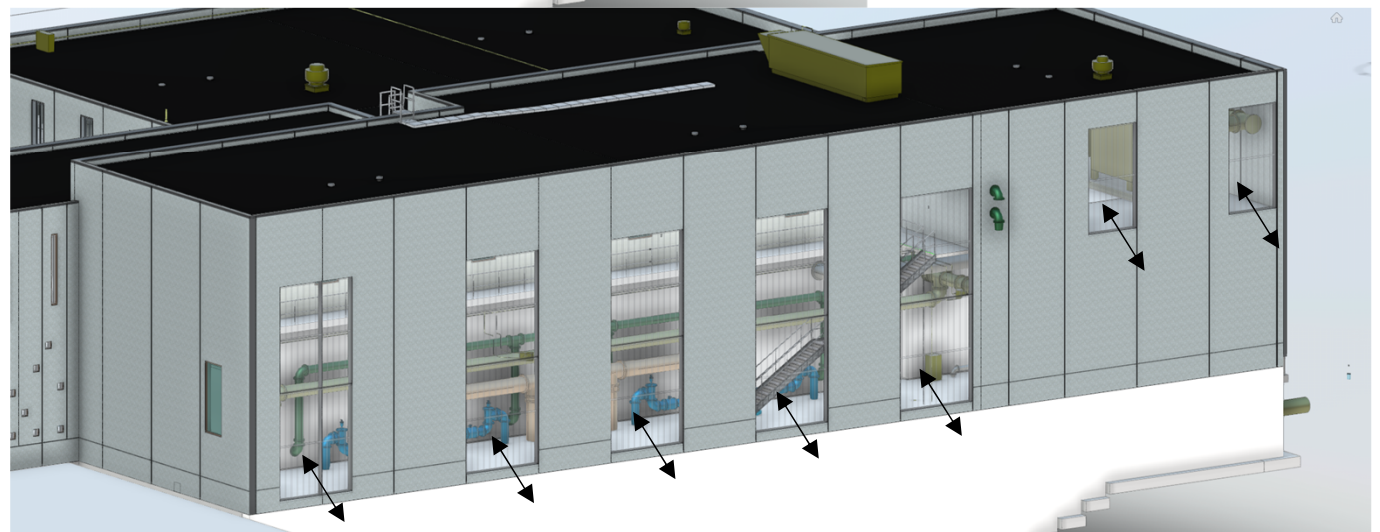
3



Future Treatment



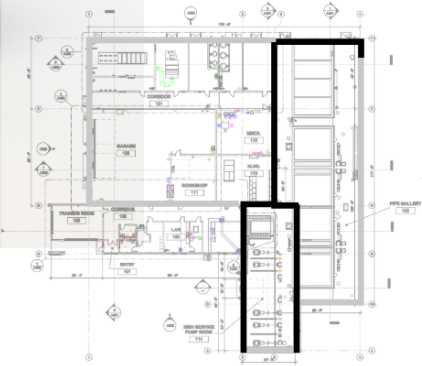
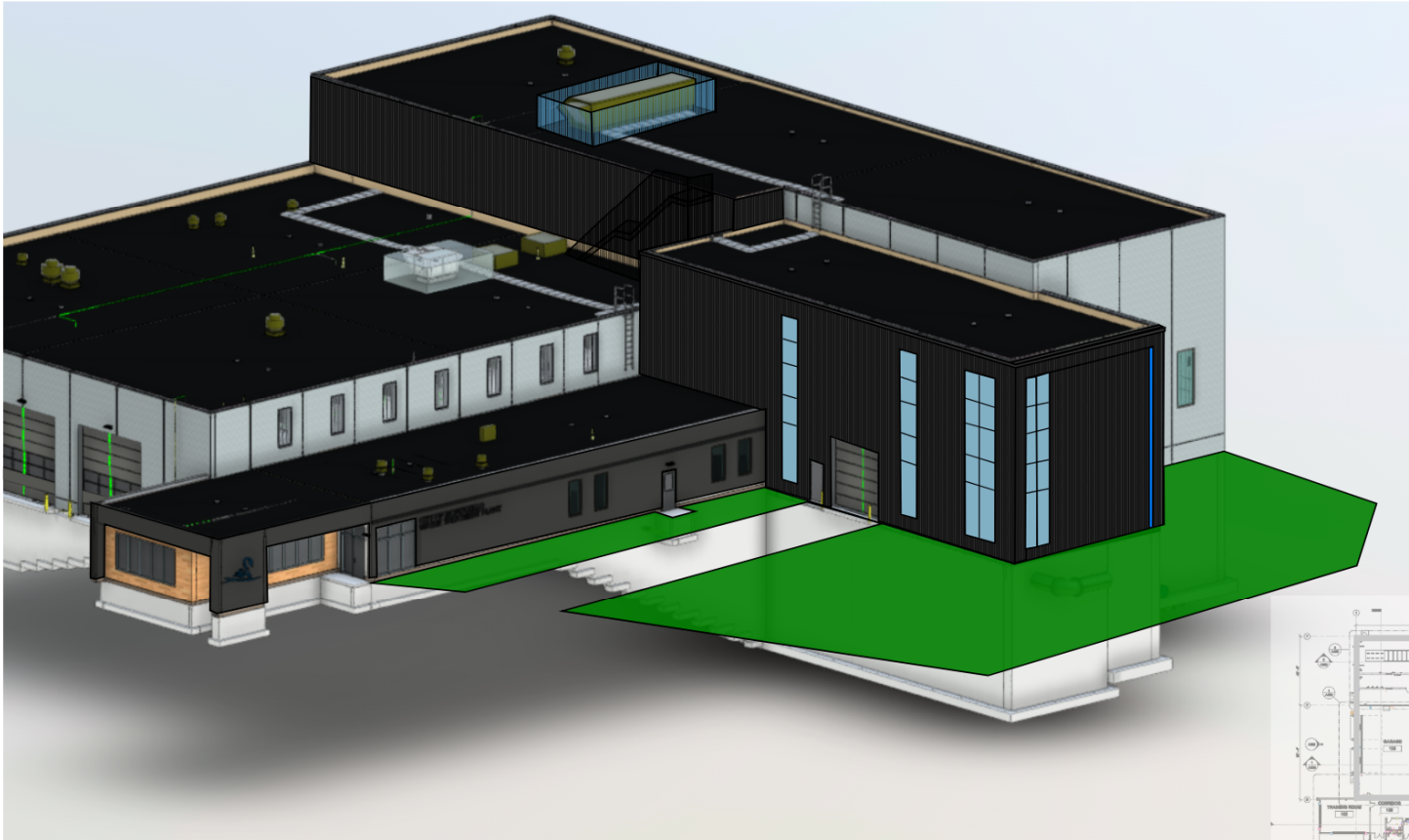
Initial Window Placement



Window Removal for Expansion

High Service Pump Room Design

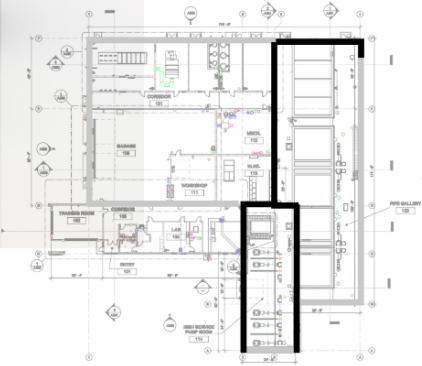
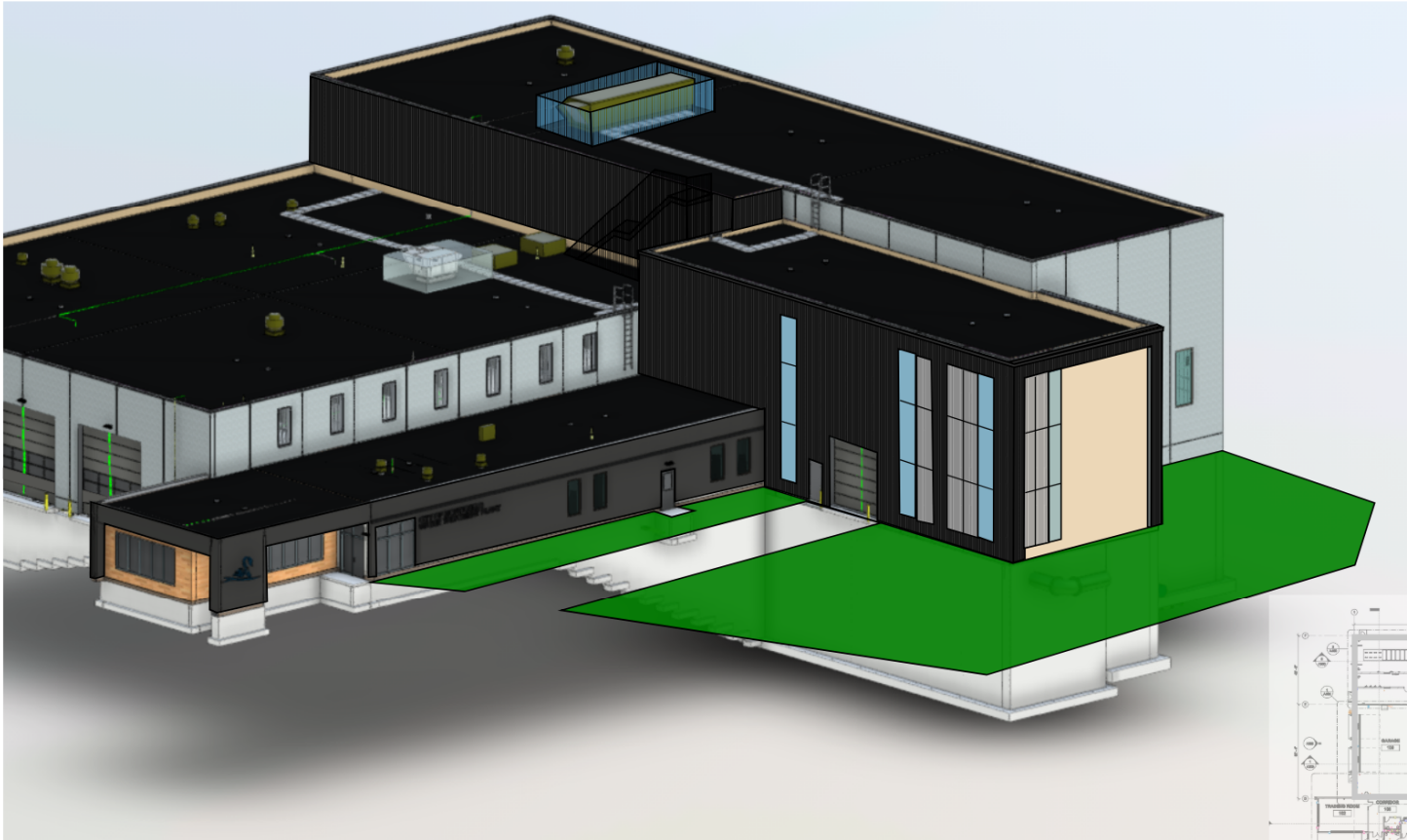
DESIGN OPTION A.1



AES **OA** OERTEL ARCHITECTS

High Service Pump Room Design

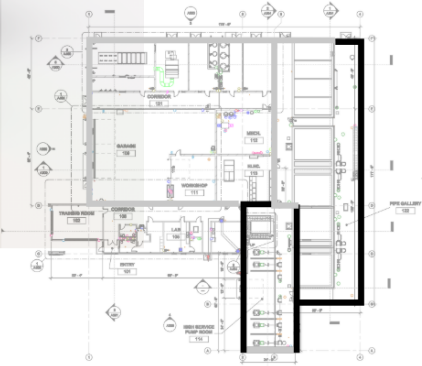
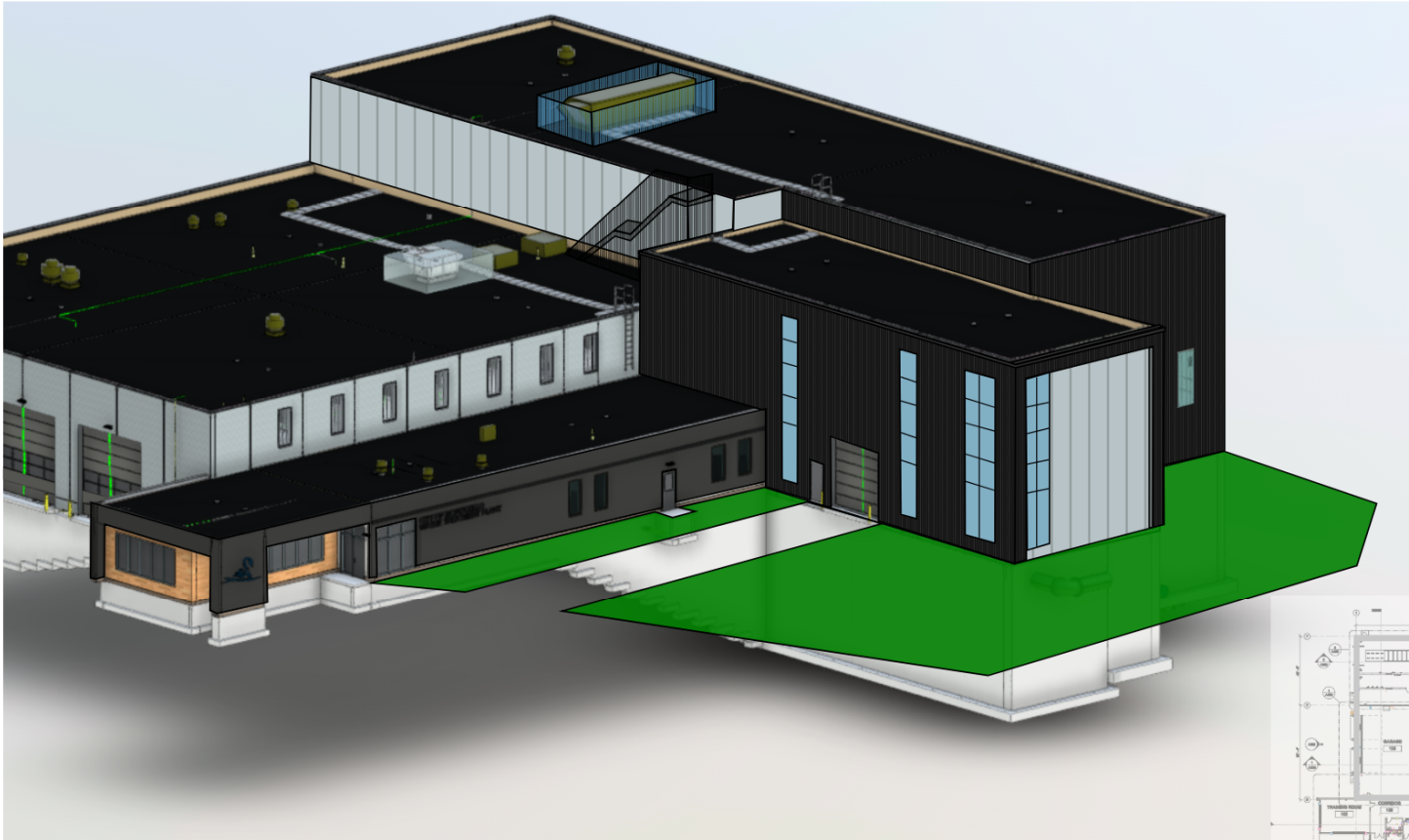
DESIGN OPTION A.2



High Service Pump Room Design

DESIGN OPTION B



AES **OA** OERTEL ARCHITECTS

North Elevation Design

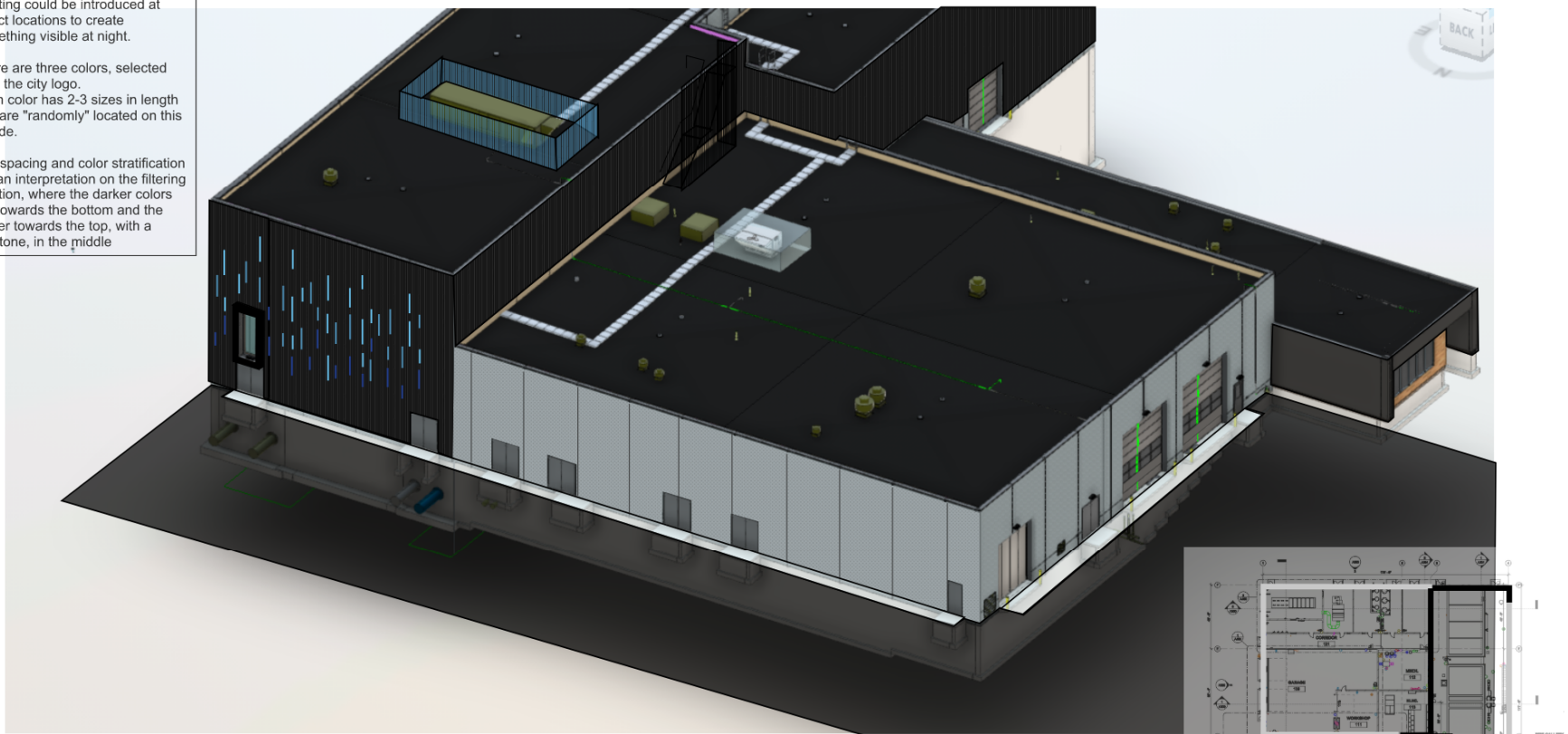
DESIGN OPTION A

Concept:
Acrylic "signage" stud mounted to precast concrete wall panel.

Lighting could be introduced at select locations to create something visible at night.

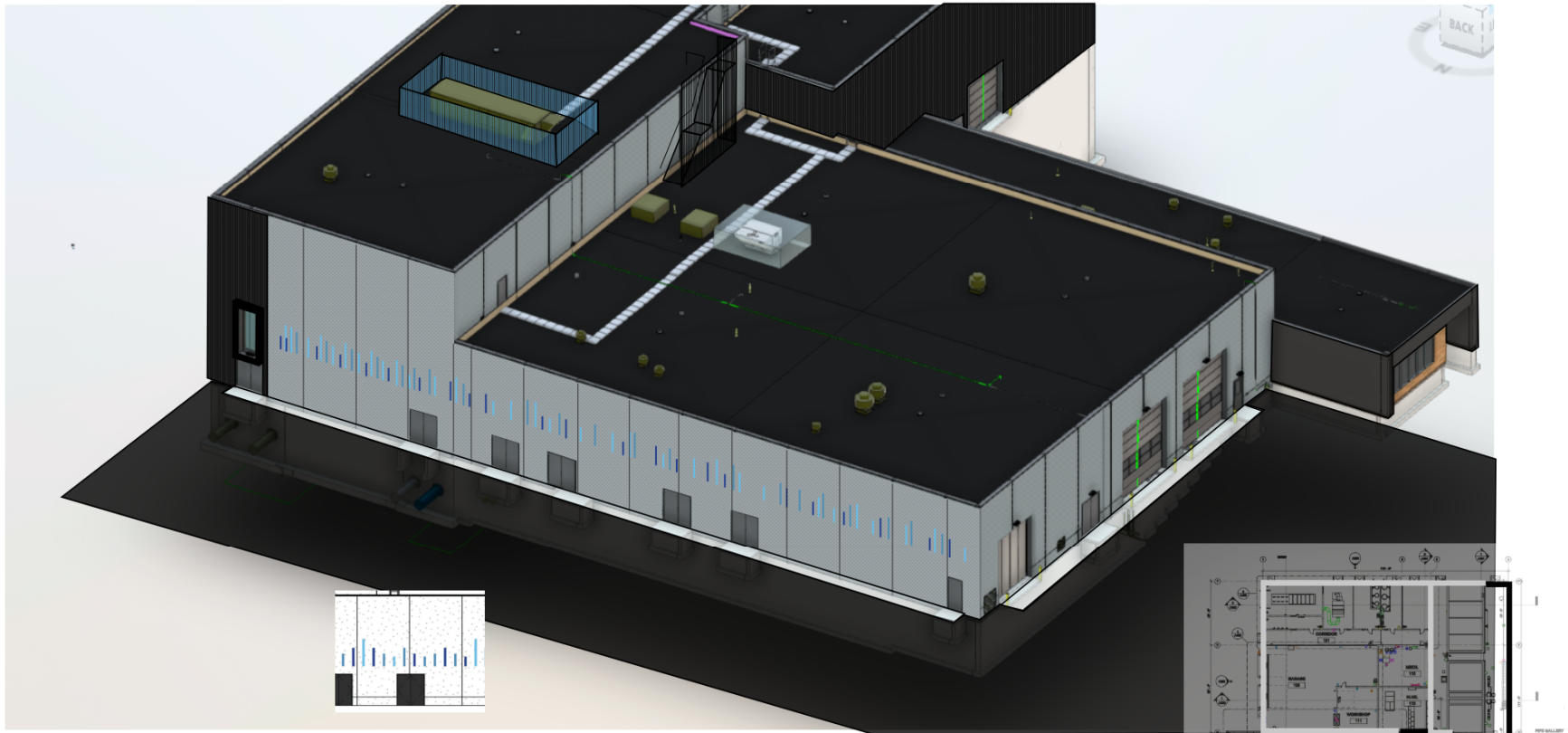
There are three colors, selected from the city logo. Each color has 2-3 sizes in length that are "randomly" located on this facade.

The spacing and color stratification are an interpretation on the filtering function, where the darker colors are towards the bottom and the lighter towards the top, with a mid-tone, in the middle



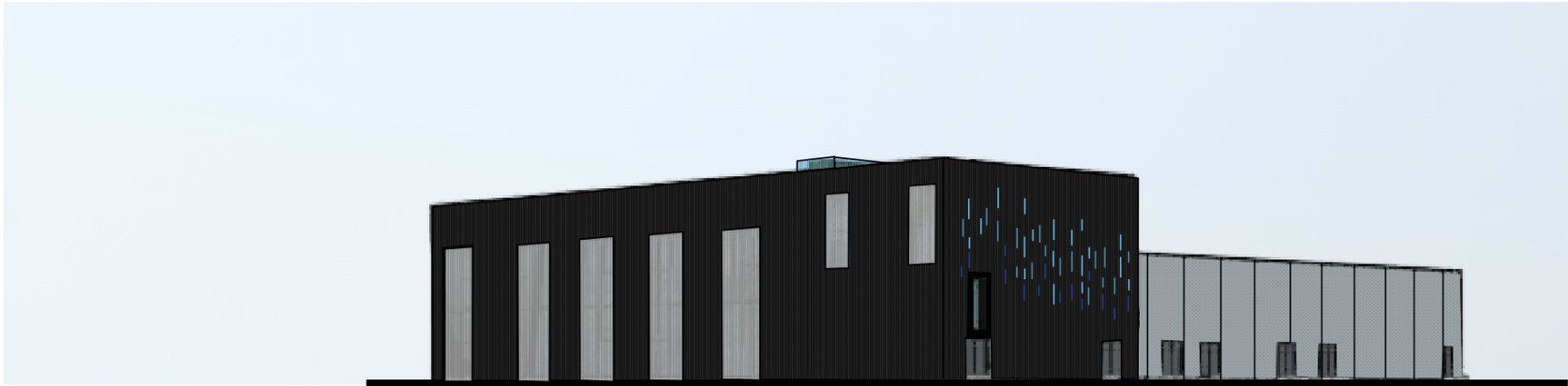
North Elevation Design

DESIGN OPTION B



Roof Top Unit Screening

ROOF SCREENING EXHIBIT



Examples and Illustrations

PRECAST DESIGN

WHITE / LIGHT PANEL

Rendered Illustrations for Monticello WTP

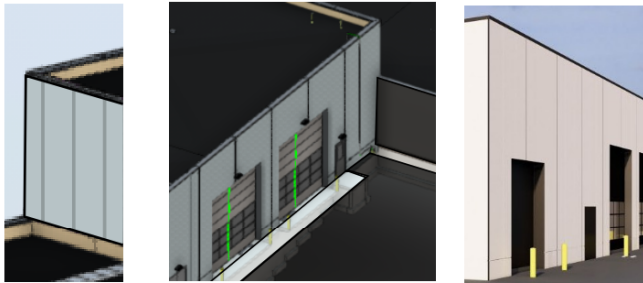
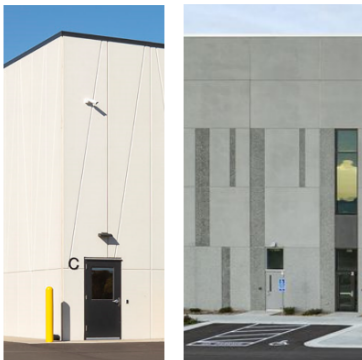


Photo Example Illustrations for Monticello WTP



Design Option Narrative

- Bright white cement and standard aggregates, acid etched finish w/ vertical reveal pattern (angled reveal illustrated from previous project)
- Light Gray panel and standard aggregates, acid etched with portions of exposed aggregate (regional project example illustrated)

CHARCOAL / DARK PANEL

Rendered Illustrations for Monticello WTP

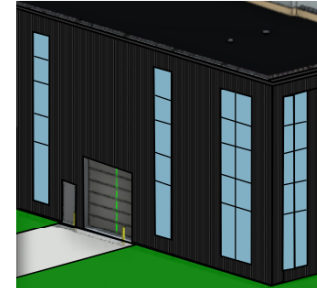
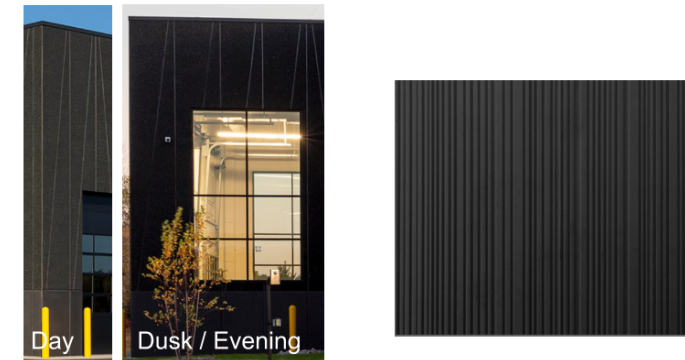


Photo Example Illustrations for Monticello WTP

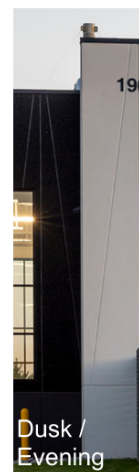


Design Option Narrative

- White cement with charcoal-black coloring agent and charcoal-black large and fine aggregates, acid etched finish w/ vertical reveal pattern (angled reveal illustrated from previous project)
- Add: shallow depth form liner with random pattern to create vertical texture. Flush surface could be etched finish, no exposed aggregates



Finish
Adjacency
Example



Examples and Illustrations

ACCENTS DESIGN OPTIONS

INFILL PANEL AT HIGH SERVICE PUMP ROOM

Rendered Illustrations for Monticello WTP

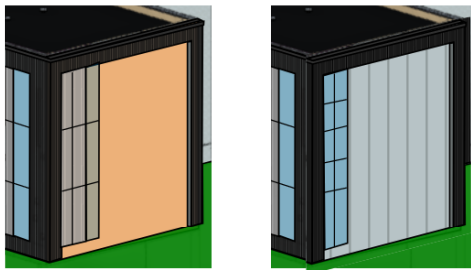
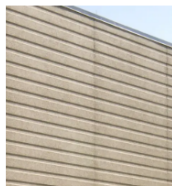
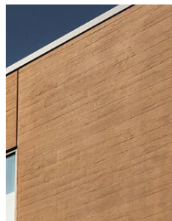


Photo Example Illustrations for Monticello WTP



Design Option Narrative

- Earth-tone precast panel, with horizontal reveals



Design Option Narrative

- Earth-tone precast panel, with wood plank form liner finish



Design Option Narrative

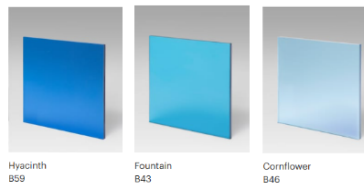
- Metal Panel In-fill w/ wood grain finish and texture

DECORATIVE / INTERPRETIVE APPLICATION - NORTH ELEVATION

Rendered Illustrations for Monticello WTP



Photo Example Illustrations for Monticello WTP



form

- Poly-Carbonate or Acrylic Colored Panels - Stud Mounted to Building Structure

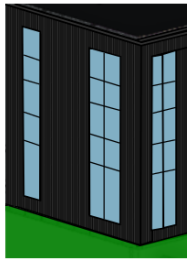


Decision Making and Direction

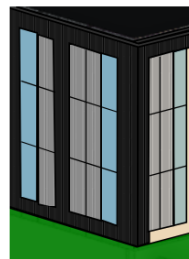
EXTERIOR DESIGN DECISION MATRIX

HIGH SERVICE PUMP ROOM

WINDOW DESIGN

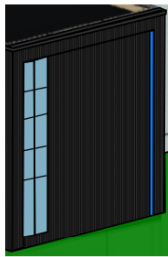


1

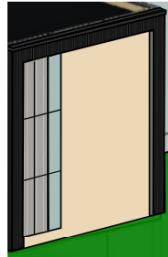


2

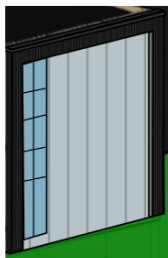
SOUTH ELEVATION



A.1



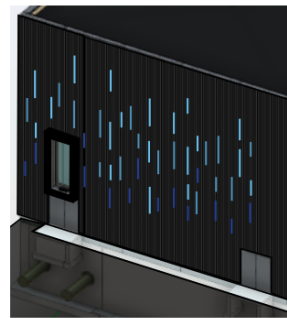
A.2



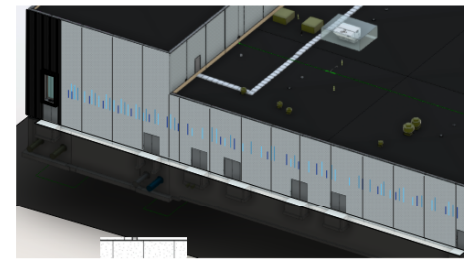
B

NORTH ELEVATION

ELEVATION DETAIL DESIGN



A



B

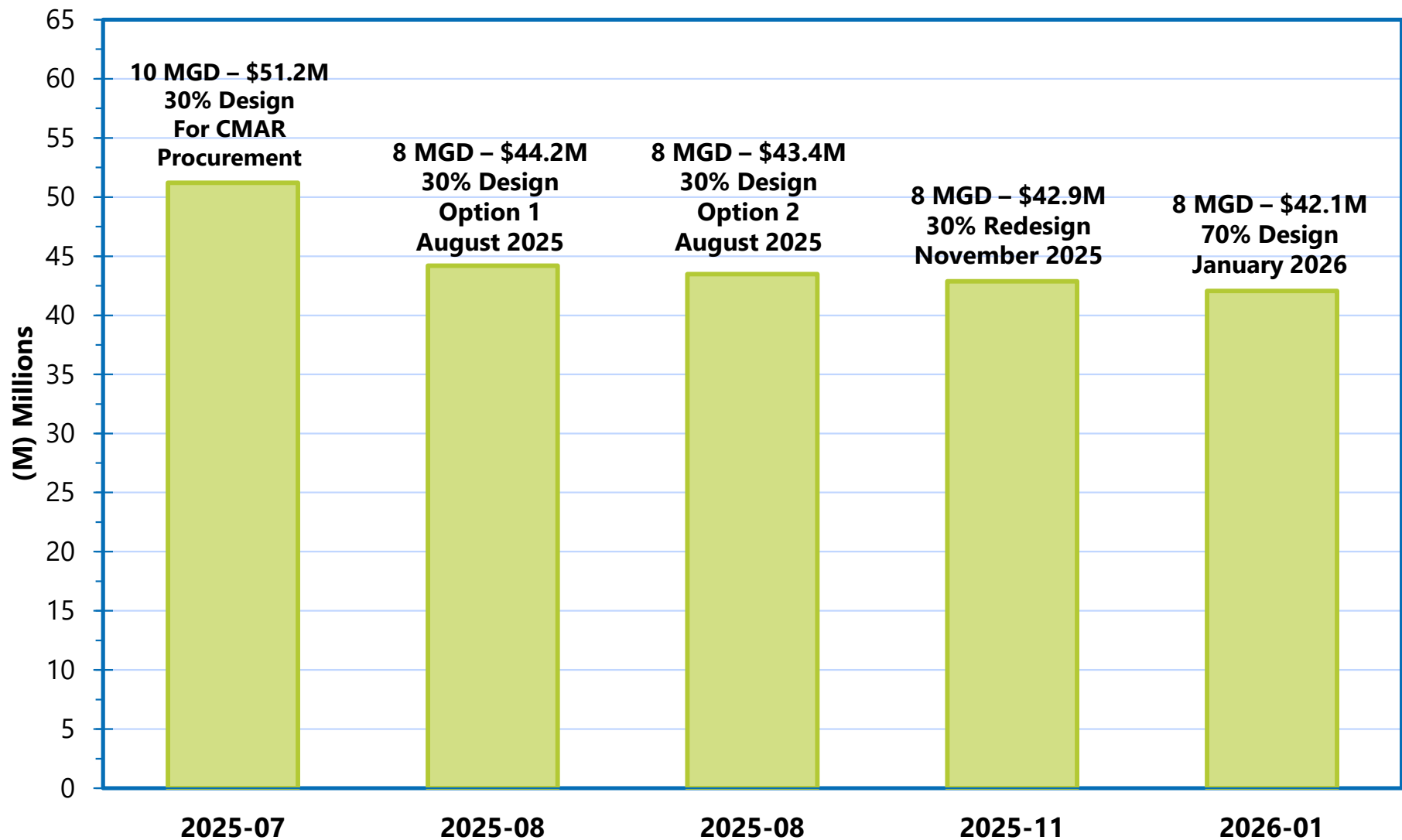
DESIGN SCHEDULE

Project Schedule

Milestone	Date
Design Kick-Off	February 2024
Preliminary Design (30%)	March – June 2024
CMAR Discussions	July – August 2024
CMAR Procurement Document Prep	September 2024 – January 2025
CMAR Procurement	February – May 2025
CMAR Kick-Off Meeting	June 2025
CMAR Preliminary Design Cost Meeting	July 2025
Preliminary Design – Redesign	August – October 2025
70% Design Deliverable	November 2025
90% Design Deliverable	February 2026
Final Design Deliverable	April 2026

CONSTRUCTION COST REVIEW

Cost Iterations & Guaranteed Maximum Price



GMP does not include engineering fees or other costs incurred by the City (Lamar Property Acquisition , etc.)

PROCUREMENT TIMELINE

What's Next

Milestone	Date
Trade Contract Qualifications	February 2026
RFQ's due & committee review	March 2026
Plans & Specifications released to Qualified Firms	April 2026
Competitive Bidding	Due May 2026
GMP Preparation & Council Delivery	5/26/2026
Construction Phase Commencement	June 2026
Substantial Completion	August 2028

FUNDING UPDATE

Project Funding

- **Estimated Total Project Cost: \$45,000,000**
- **State Bonding Grant: \$11,000,000**
- **Emerging Contaminant Assistance: \$2,000,000**
 - Additional \$3,000,000 possible pending project certification
- **Estimated PFA Loan: \$32,000,000**
 - Potential PFA Loan Rate: 2.5% - 3.0%
 - At 2.6%, estimated annual payment would be \$2,200,000
 - 20-year loan

Thank you!
Questions?



| Advanced Engineering and Environmental Services, LLC

MONTICELLO WATER TREATMENT PLANT

EXTERIOR DESIGN REVISION AND OPTIONS

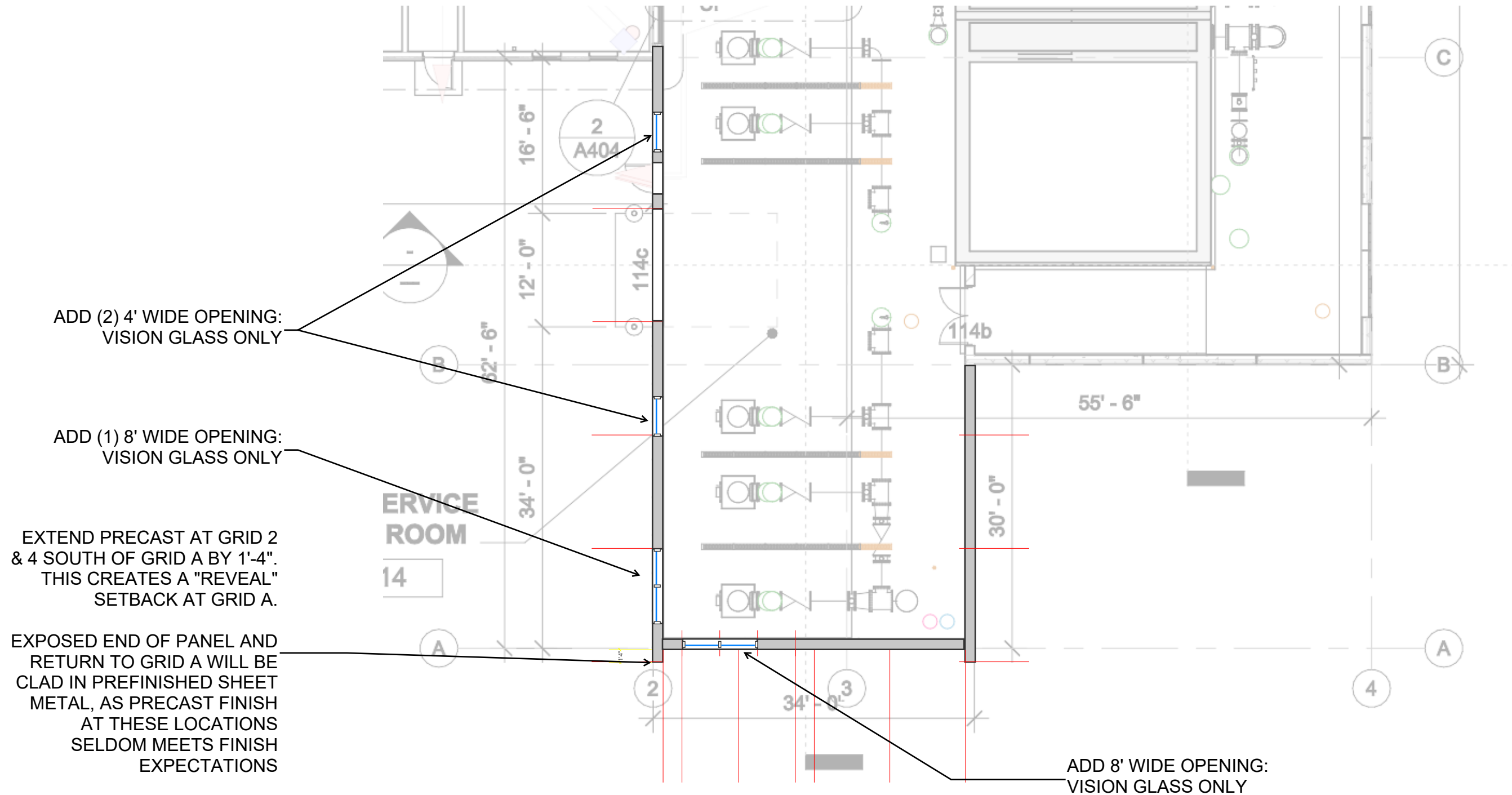
Design ideations for review by owner and project design team for final modeling and rendering

OA OERTEL
ARCHITECTS



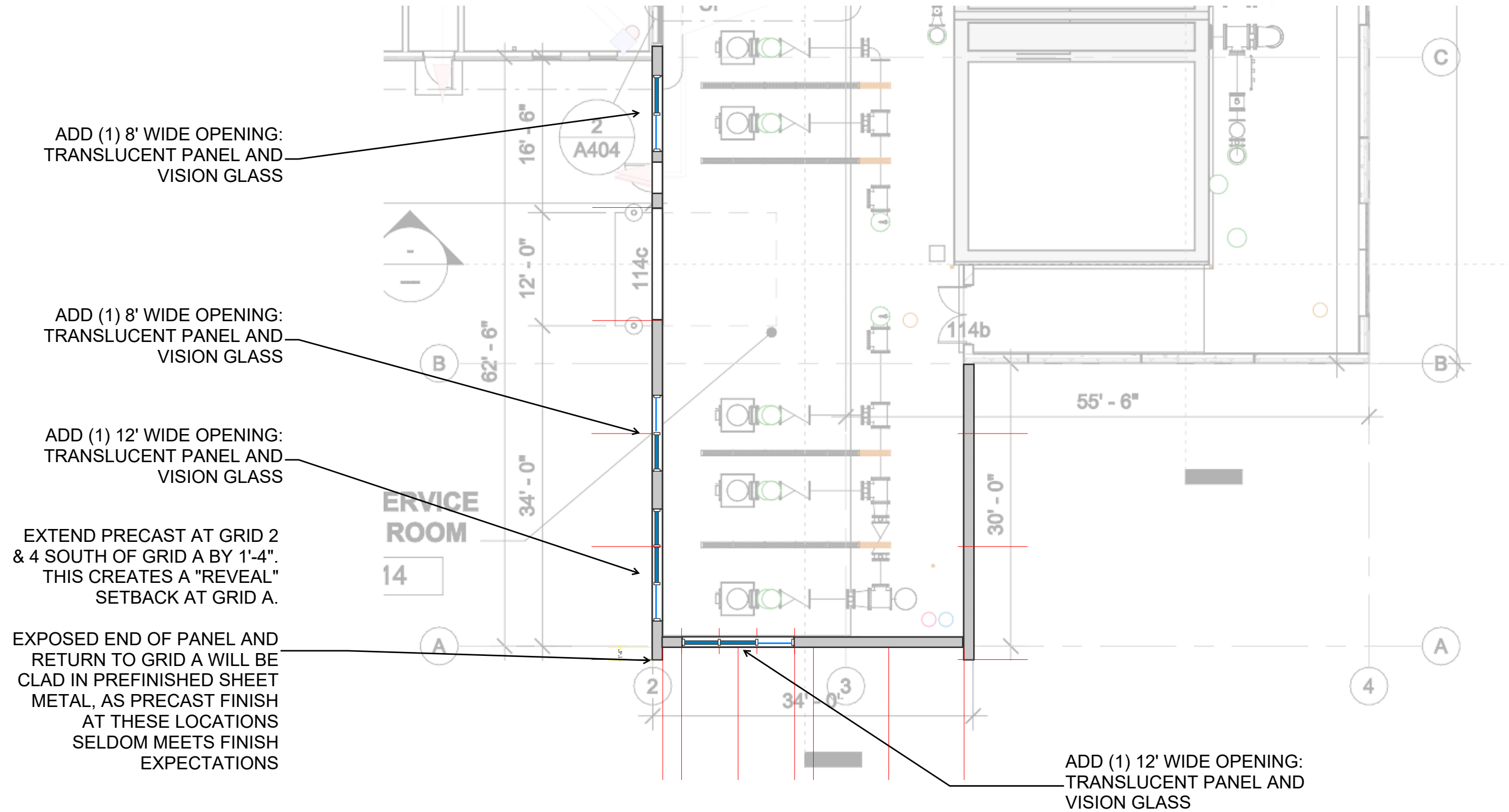
HIGH SERVICE PUMP ROOM

WINDOW VARIATION A.1

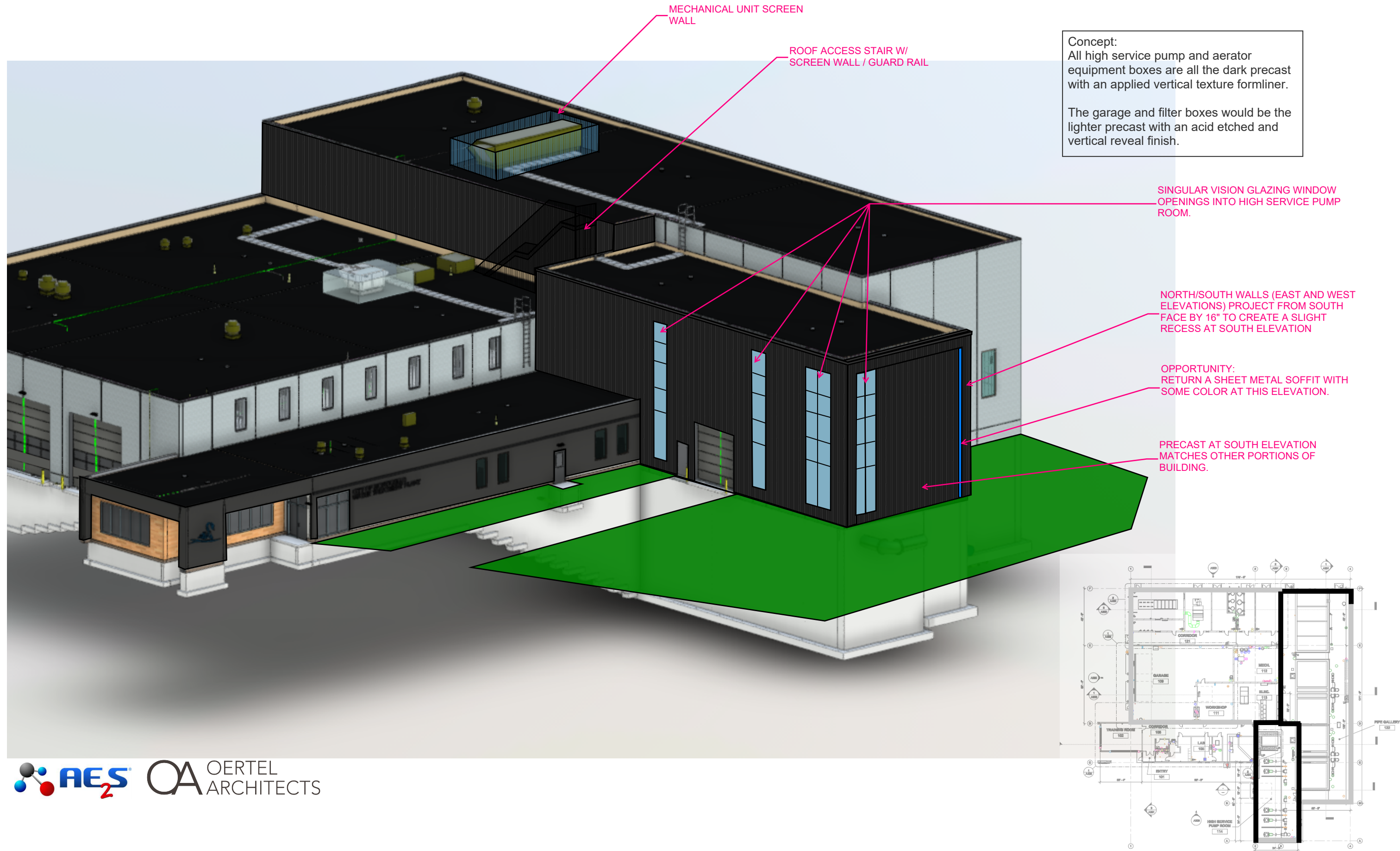


HIGH SERVICE PUMP ROOM

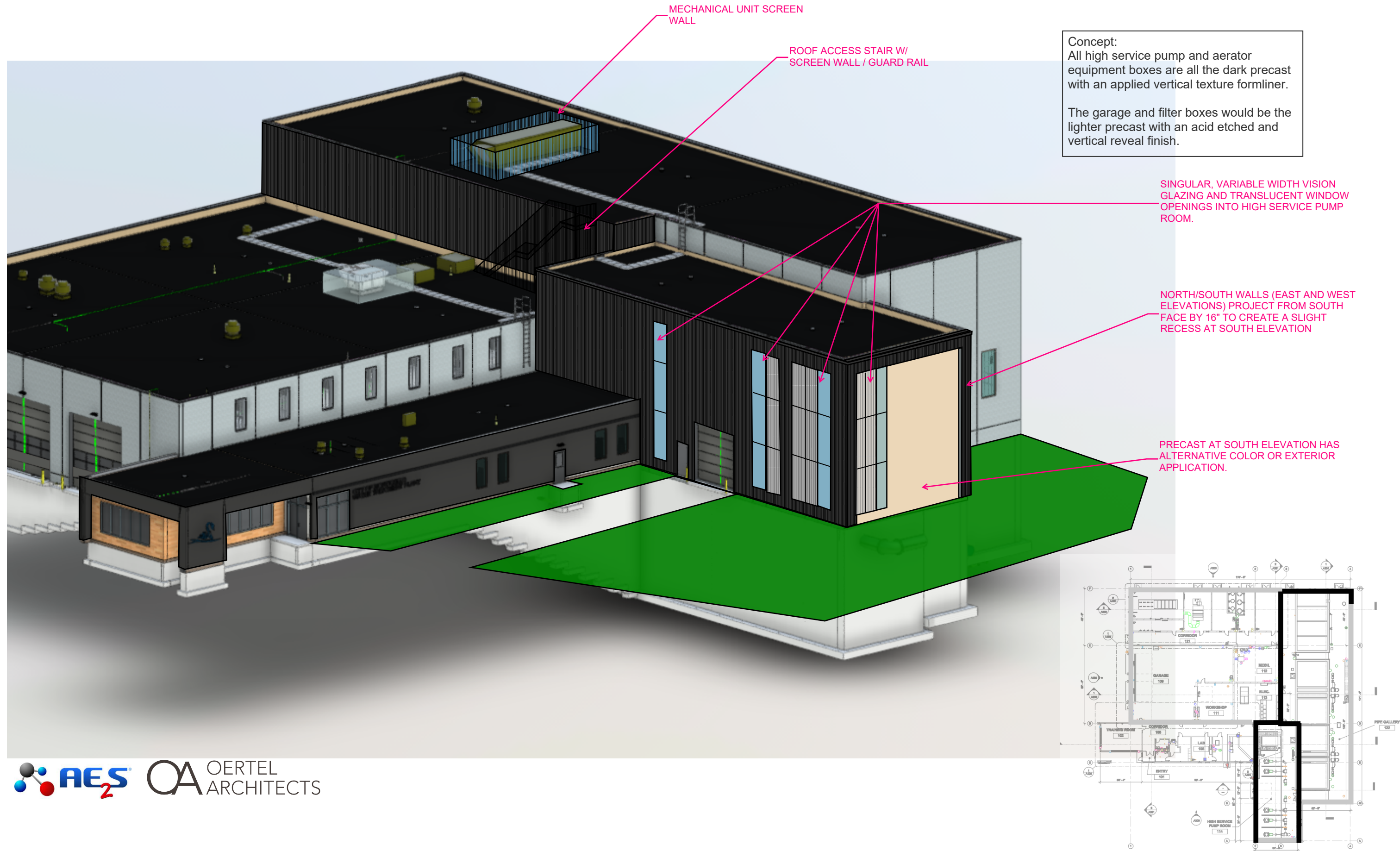
WINDOW VARIATION A.2



DESIGN OPTION A.1



DESIGN OPTION A.2



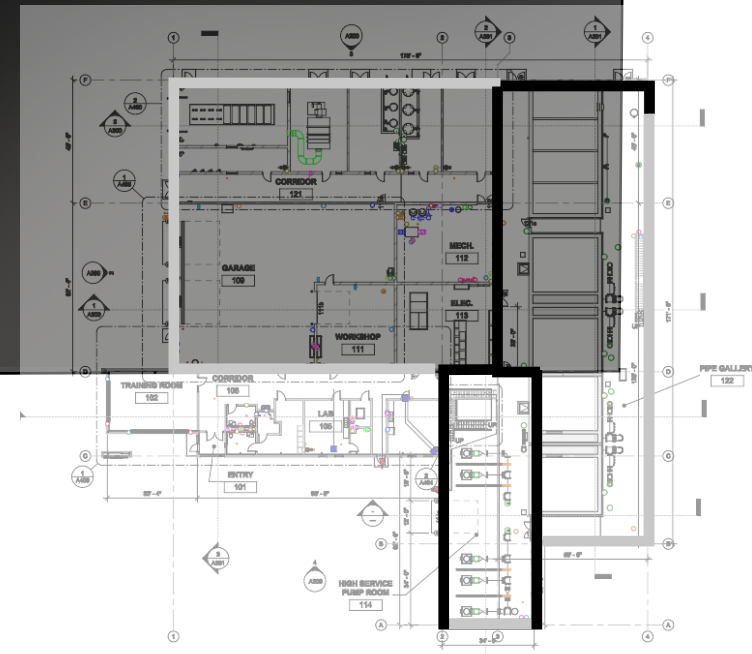
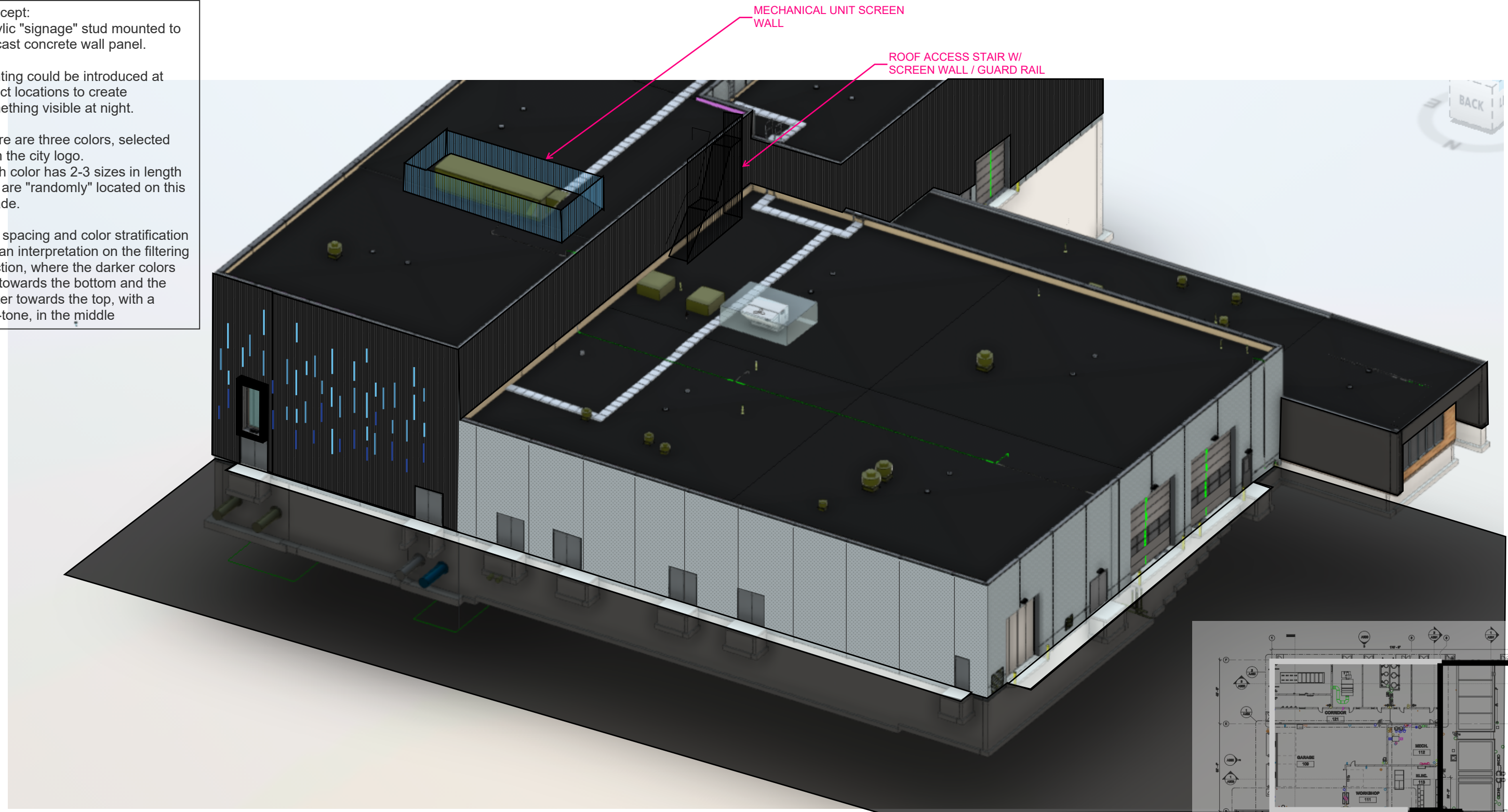
DESIGN OPTION A

Concept:
Acrylic "signage" stud mounted to precast concrete wall panel.

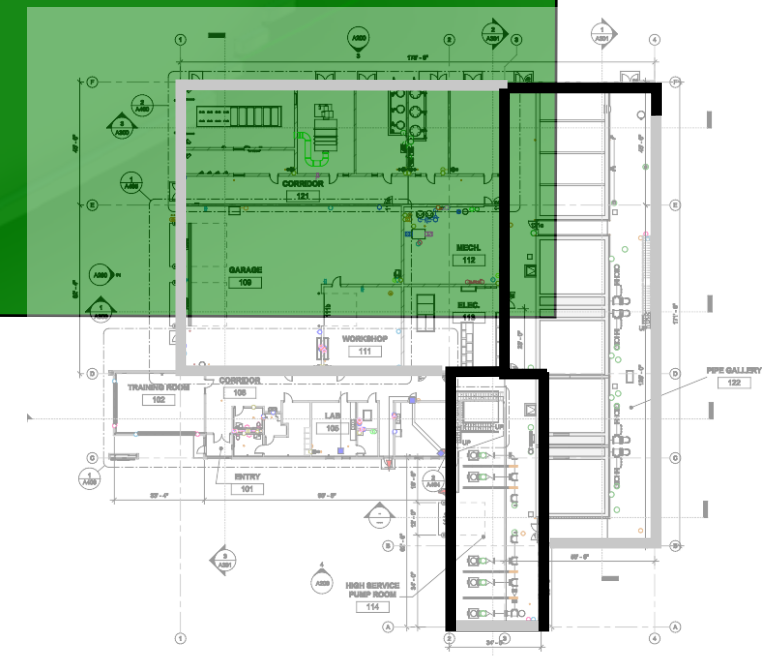
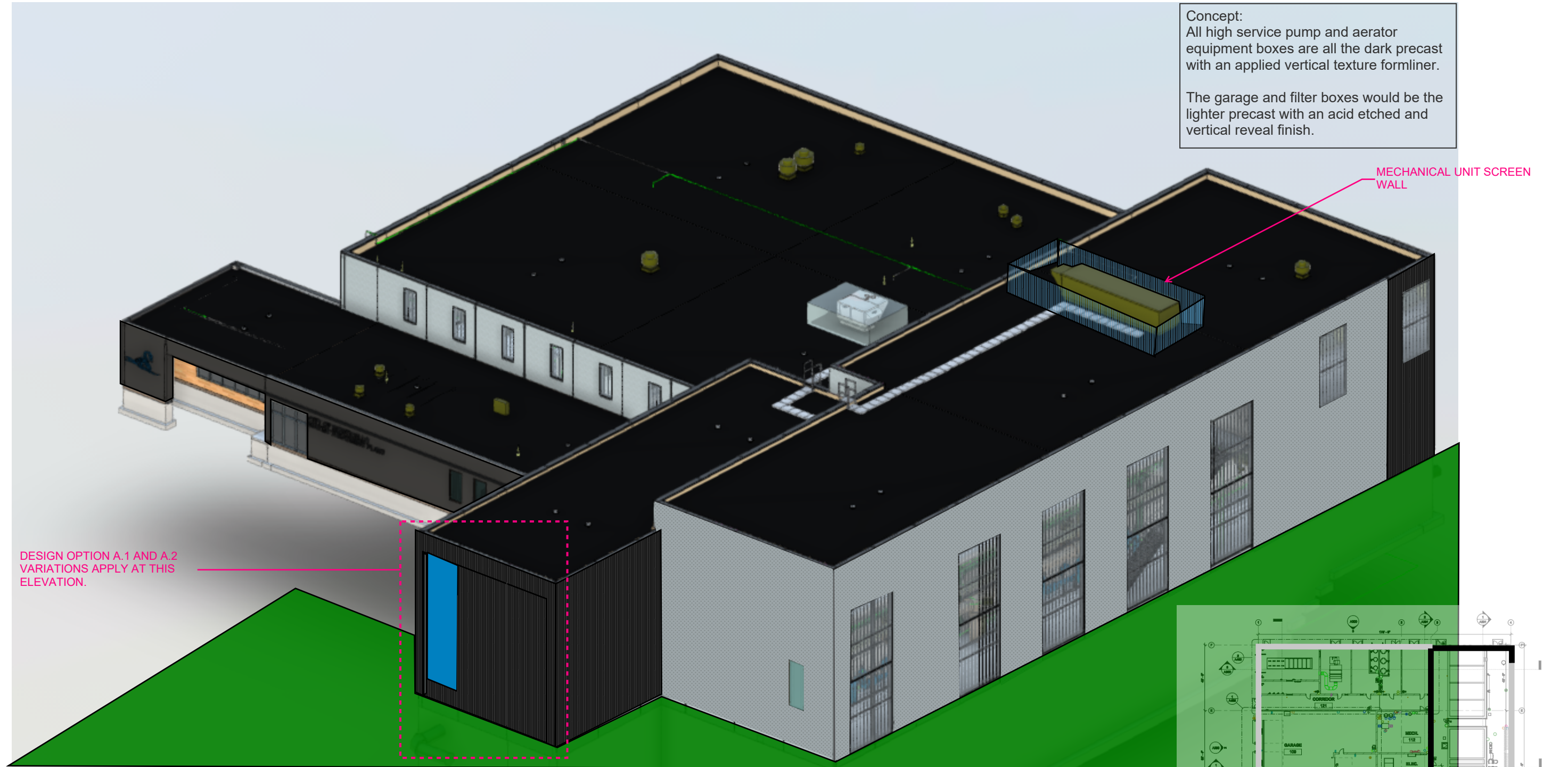
Lighting could be introduced at select locations to create something visible at night.

There are three colors, selected from the city logo. Each color has 2-3 sizes in length that are "randomly" located on this facade.

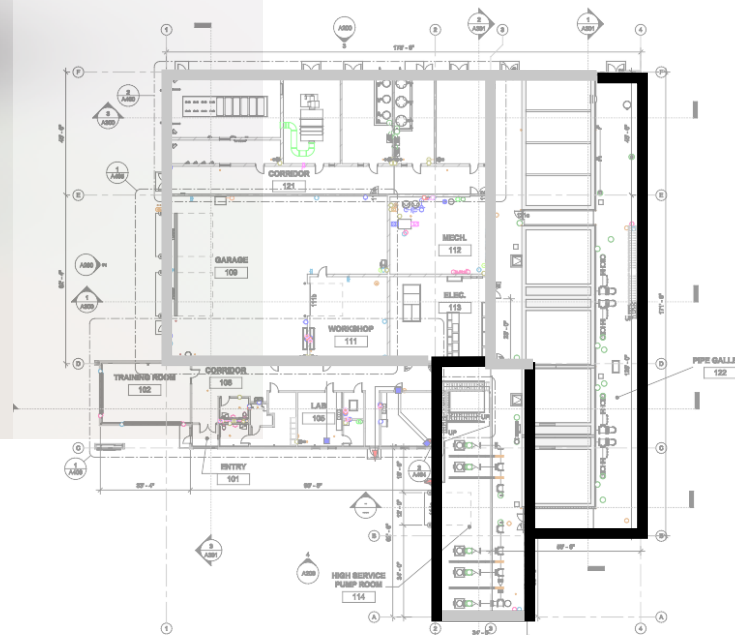
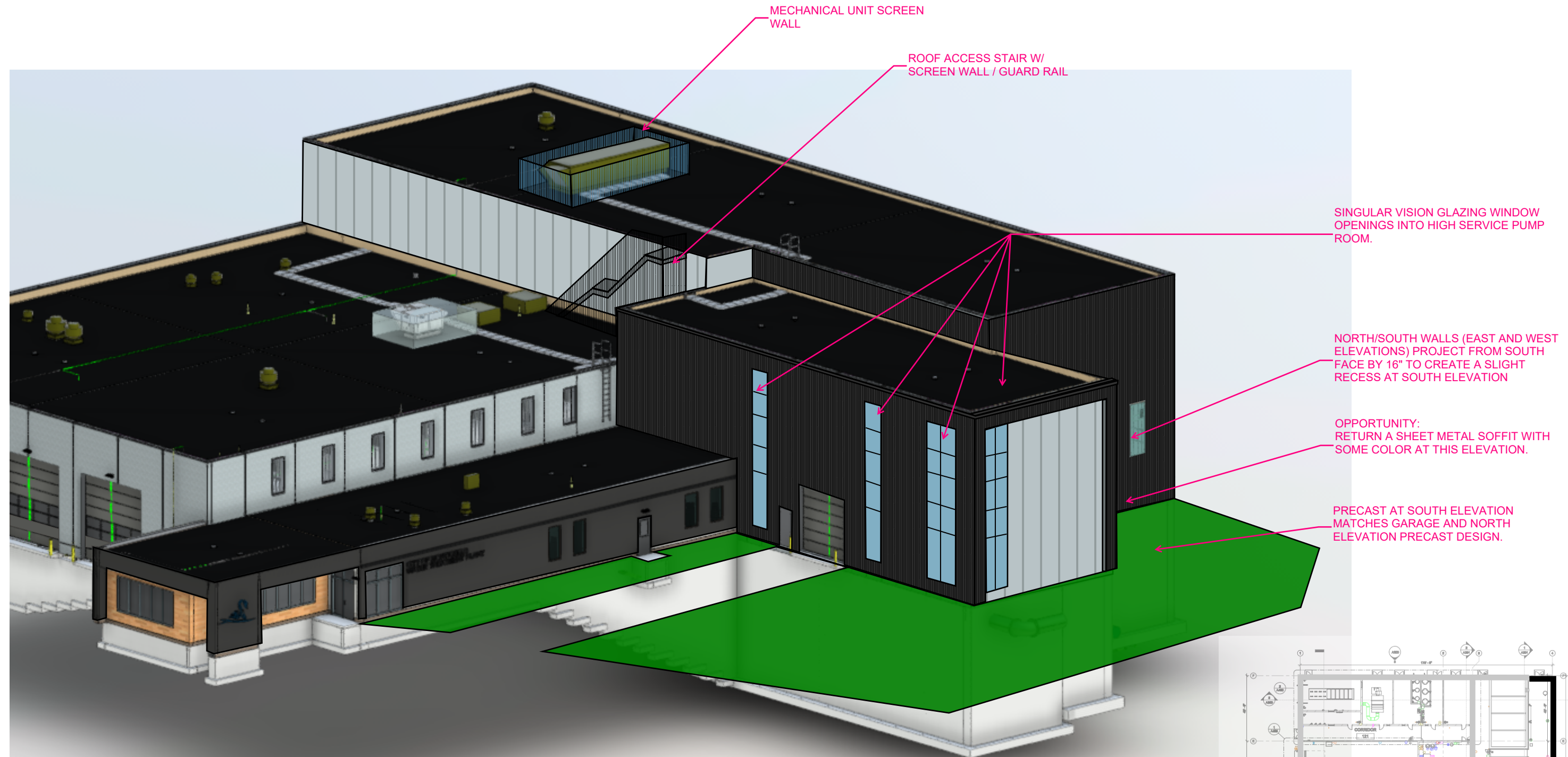
The spacing and color stratification are an interpretation on the filtering function, where the darker colors are towards the bottom and the lighter towards the top, with a mid-tone, in the middle



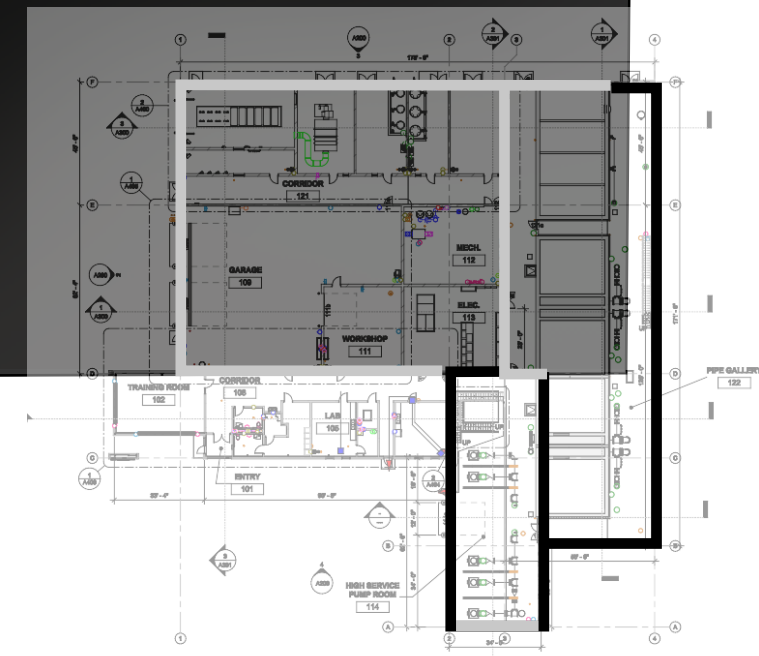
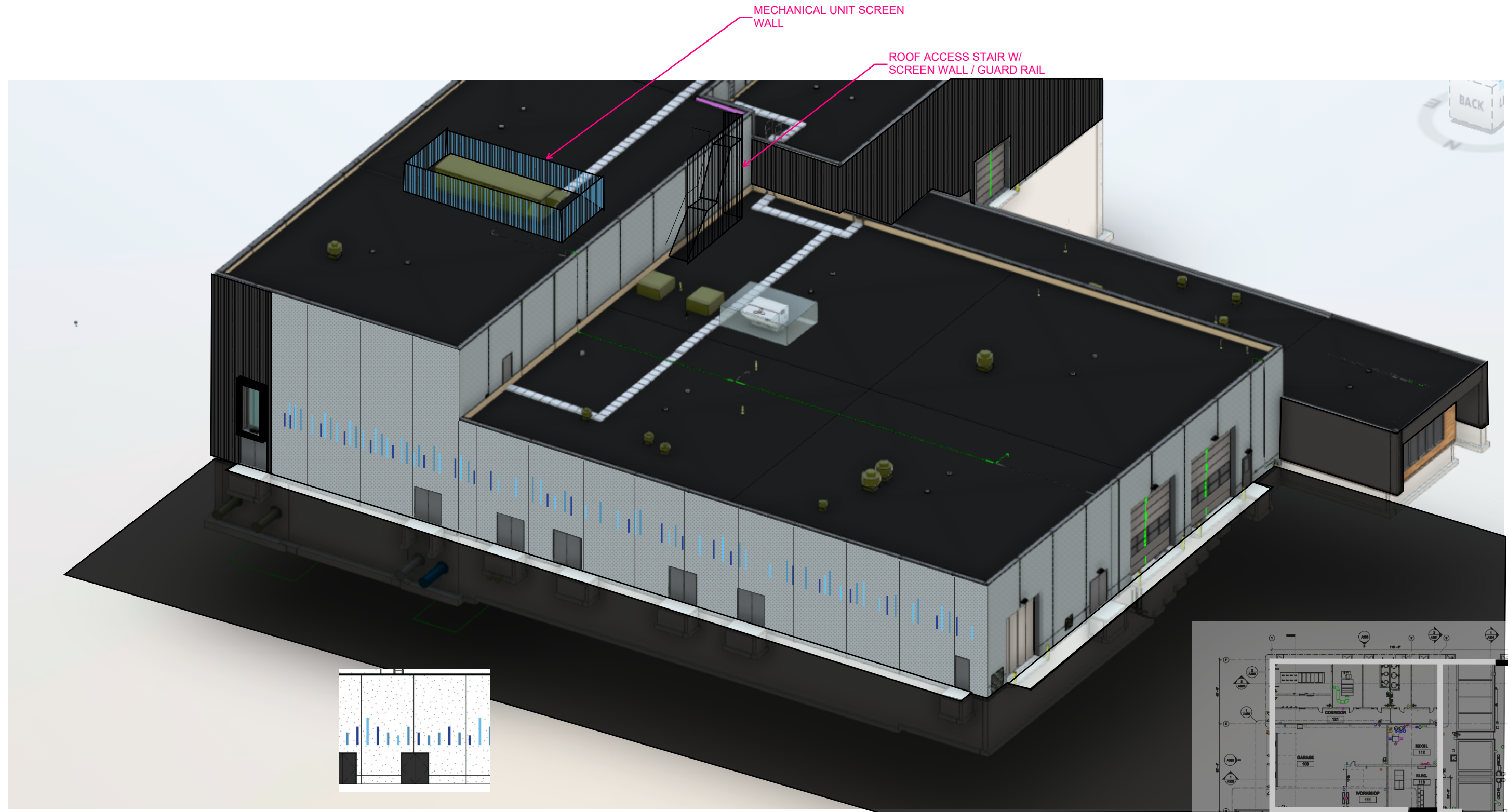
DESIGN OPTION A



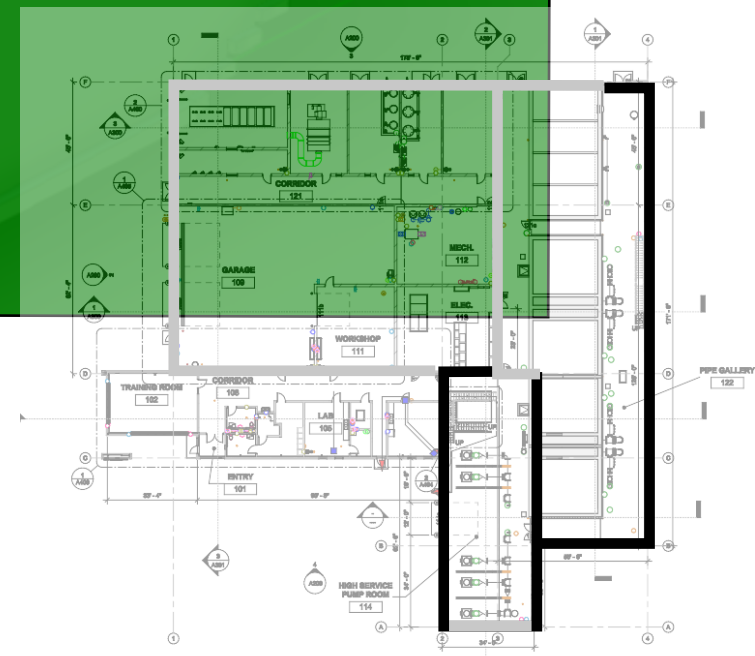
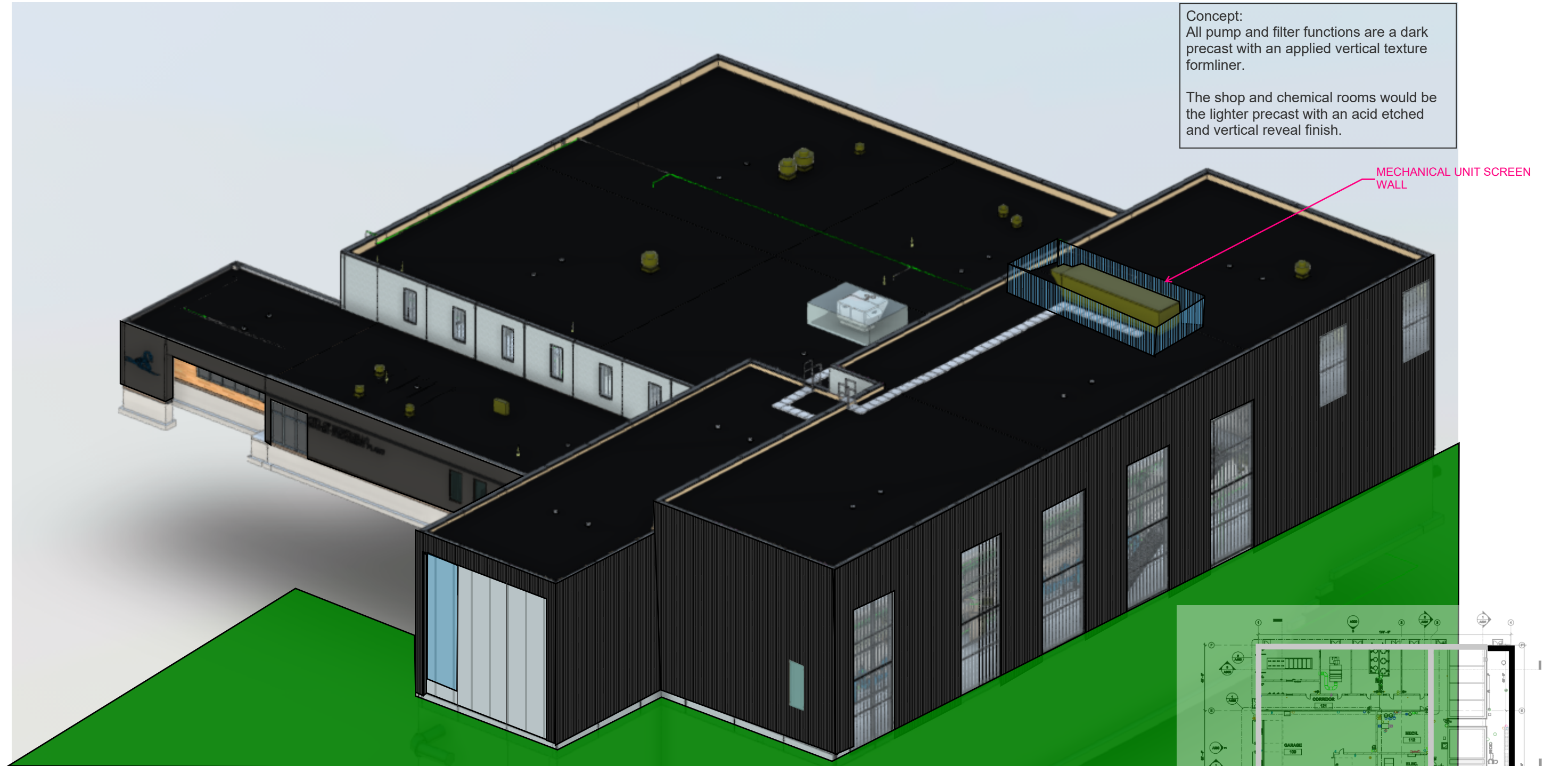
DESIGN OPTION B



DESIGN OPTION B



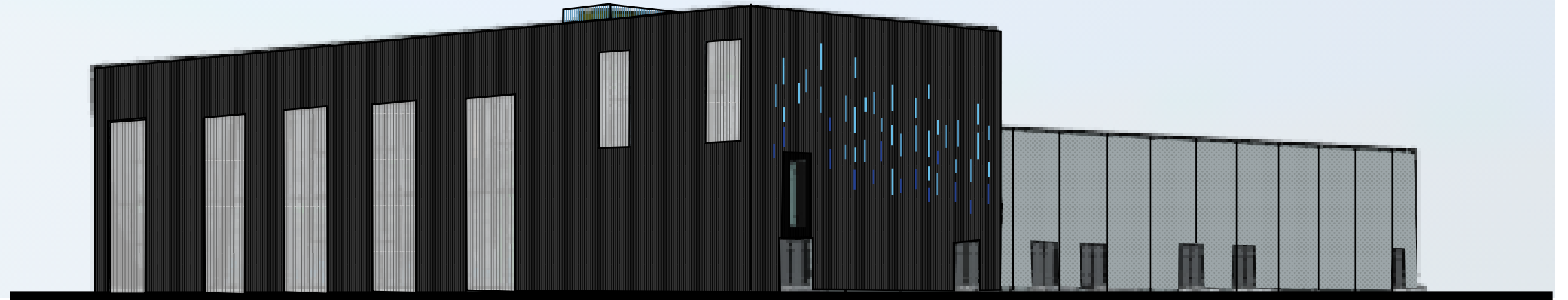
DESIGN OPTION A



ROOF SCREENING EXHIBIT

ROOF TOP EQUIPMENT VIEW CORRIDOR.

Potential viewing of the larger rooftop equipment is possible from the I94 north/west bound traffic.



ROOF TOP EQUIPMENT VIEW CORRIDOR.

Potential viewing of the larger rooftop equipment is possible from the I94 south/east bound traffic.



PRECAST DESIGN

WHITE / LIGHT PANEL

Rendered Illustrations for Monticello WTP

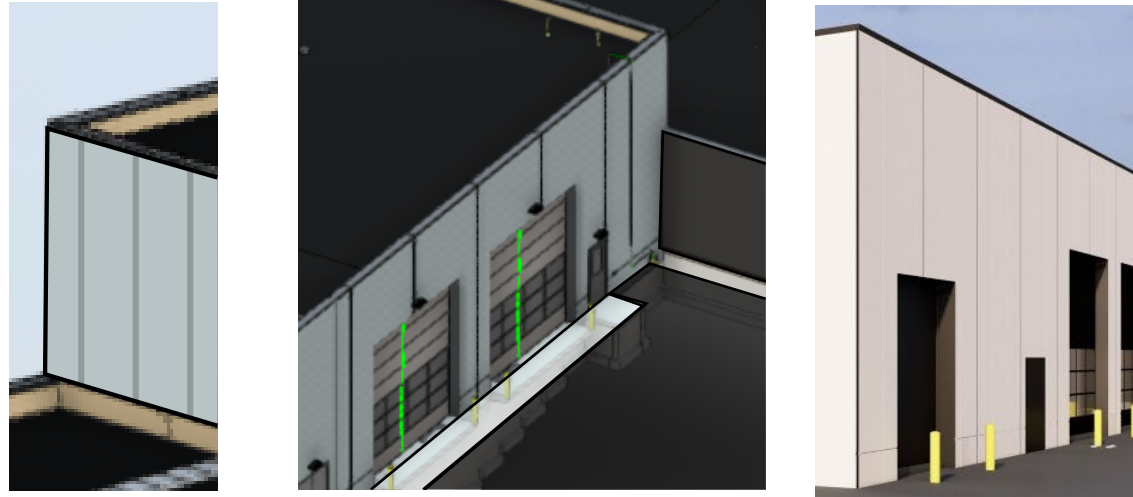
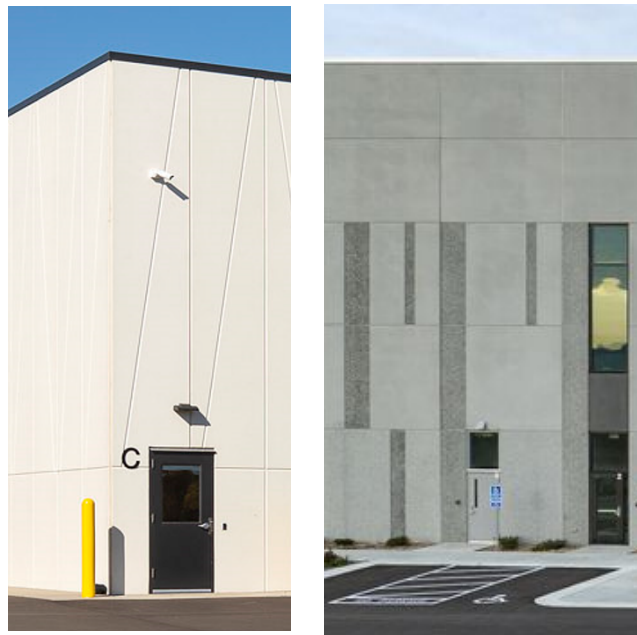


Photo Example Illustrations for Monticello WTP



Design Option Narrative

- Bright white cement and standard aggregates, acid etched finish w/ vertical reveal pattern (angled reveal illustrated from previous project)
- Light Gray panel and standard aggregates, acid etched with portions of exposed aggregate (regional project example illustrated)

CHARCOAL / DARK PANEL

Rendered Illustrations for Monticello WTP

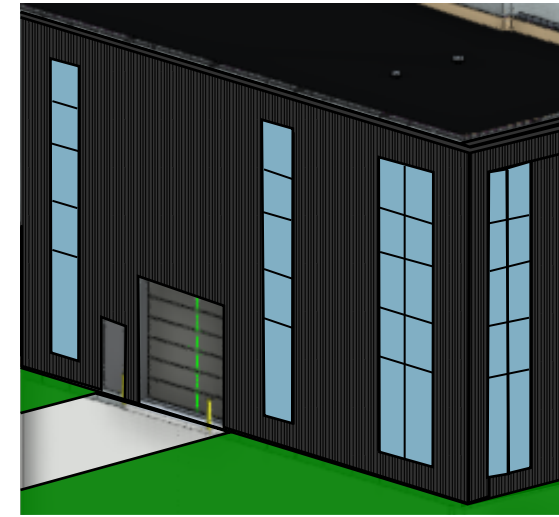


Photo Example Illustrations for Monticello WTP



Design Option Narrative

- White cement with charcoal-black coloring agent and charcoal-black large and fine aggregates, acid etched finish w/ vertical reveal pattern (angled reveal illustrated from previous project)
- Add: shallow depth form liner with random pattern to create vertical texture. Flush surface could be etched finish, no exposed aggregates



Finish
Adjacency
Example



ACCENTS DESIGN OPTIONS

INFILL PANEL AT HIGH SERVICE PUMP ROOM

Rendered Illustrations for Monticello WTP

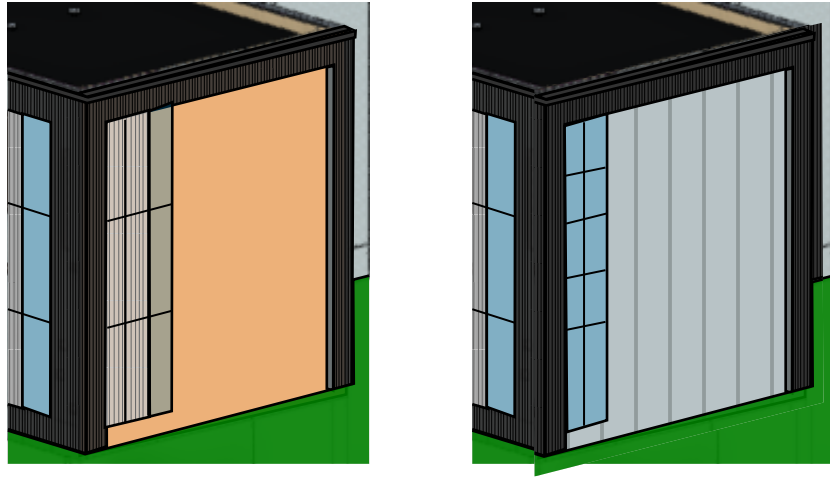
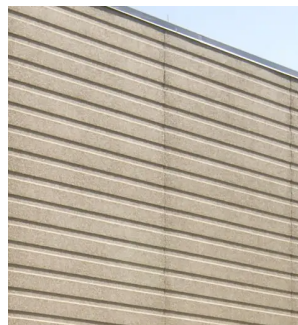
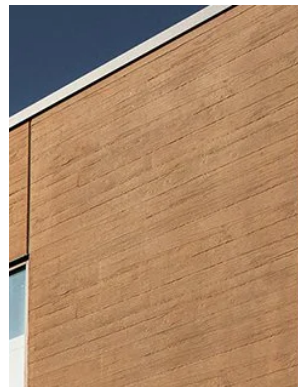


Photo Example Illustrations for Monticello WTP



Design Option Narrative
 ■ Earth-tone precast panel, with horizontal reveals



Design Option Narrative
 ■ Earth-tone precast panel, with wood plank form liner finish



Design Option Narrative
 ■ Metal Panel In-fill w/ wood grain finish and texture

DECORATIVE / INTERPRETIVE APPLICATION - NORTH ELEVATION

Rendered Illustrations for Monticello WTP

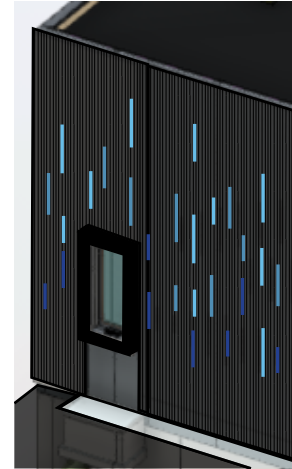
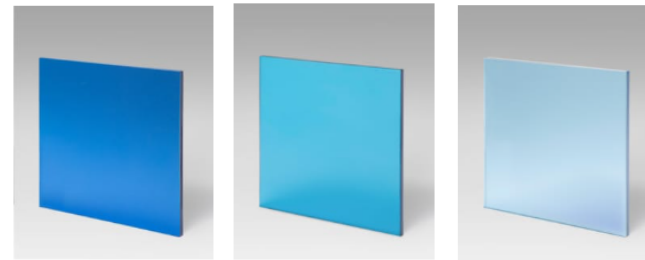


Photo Example Illustrations for Monticello WTP



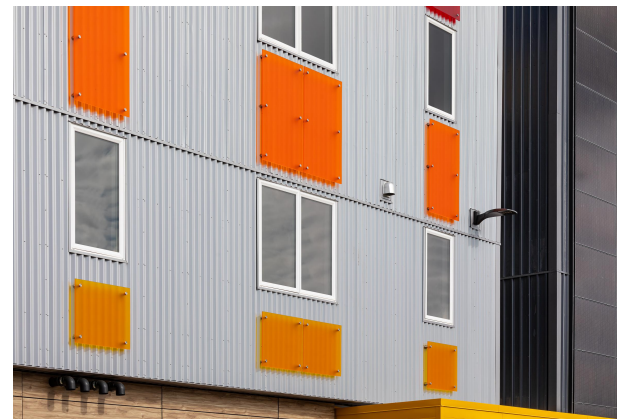
Hyacinth B59

Fountain B43

Cornflower B46



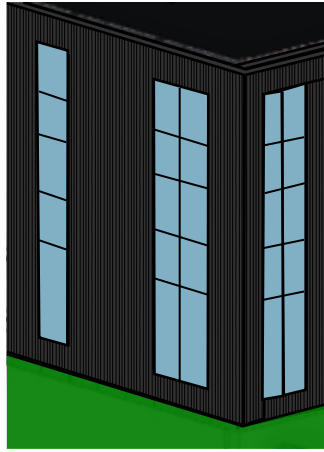
■ Poly-Carbonate or Acrylic Colored Panels - Stud Mounted to Building Structure



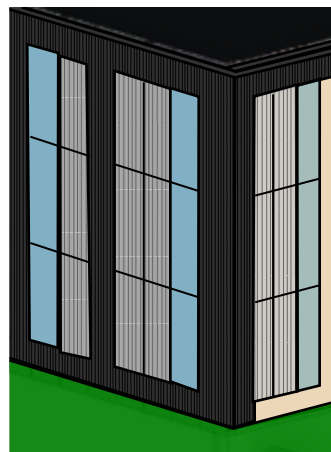
EXTERIOR DESIGN DECISION MATRIX

HIGH SERVICE PUMP ROOM

WINDOW DESIGN

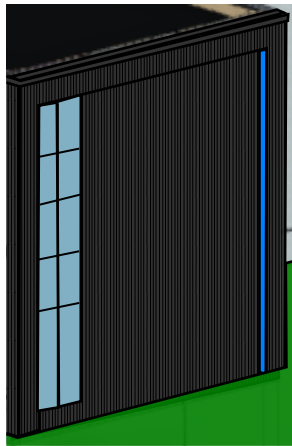


1

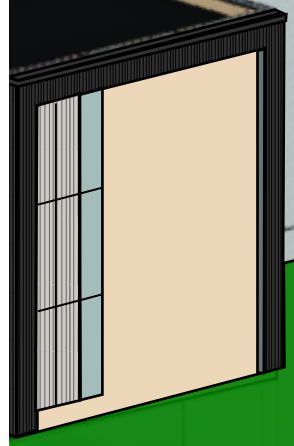


2

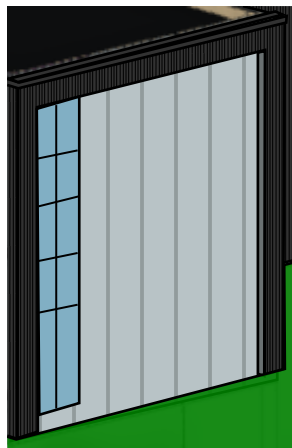
SOUTH ELEVATION



A.1



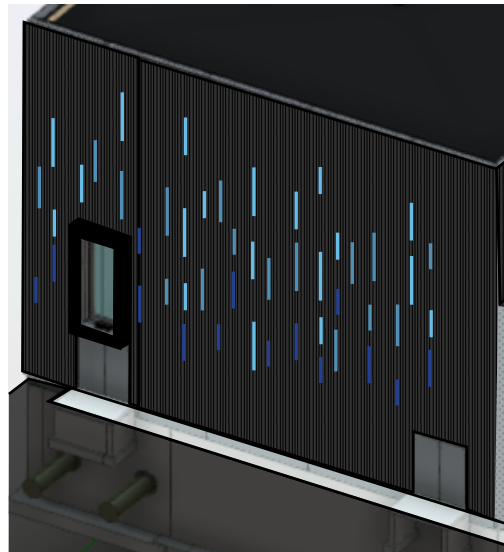
A.2



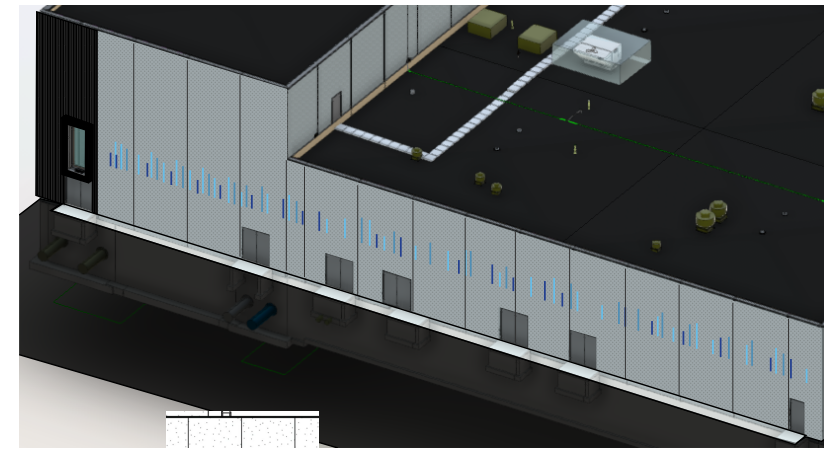
B

NORTH ELEVATION

ELEVATION DETAIL DESIGN



A



B

MONTICELLO WATER SUPPLY TREATMENT PLANT - QR CODE SHEET

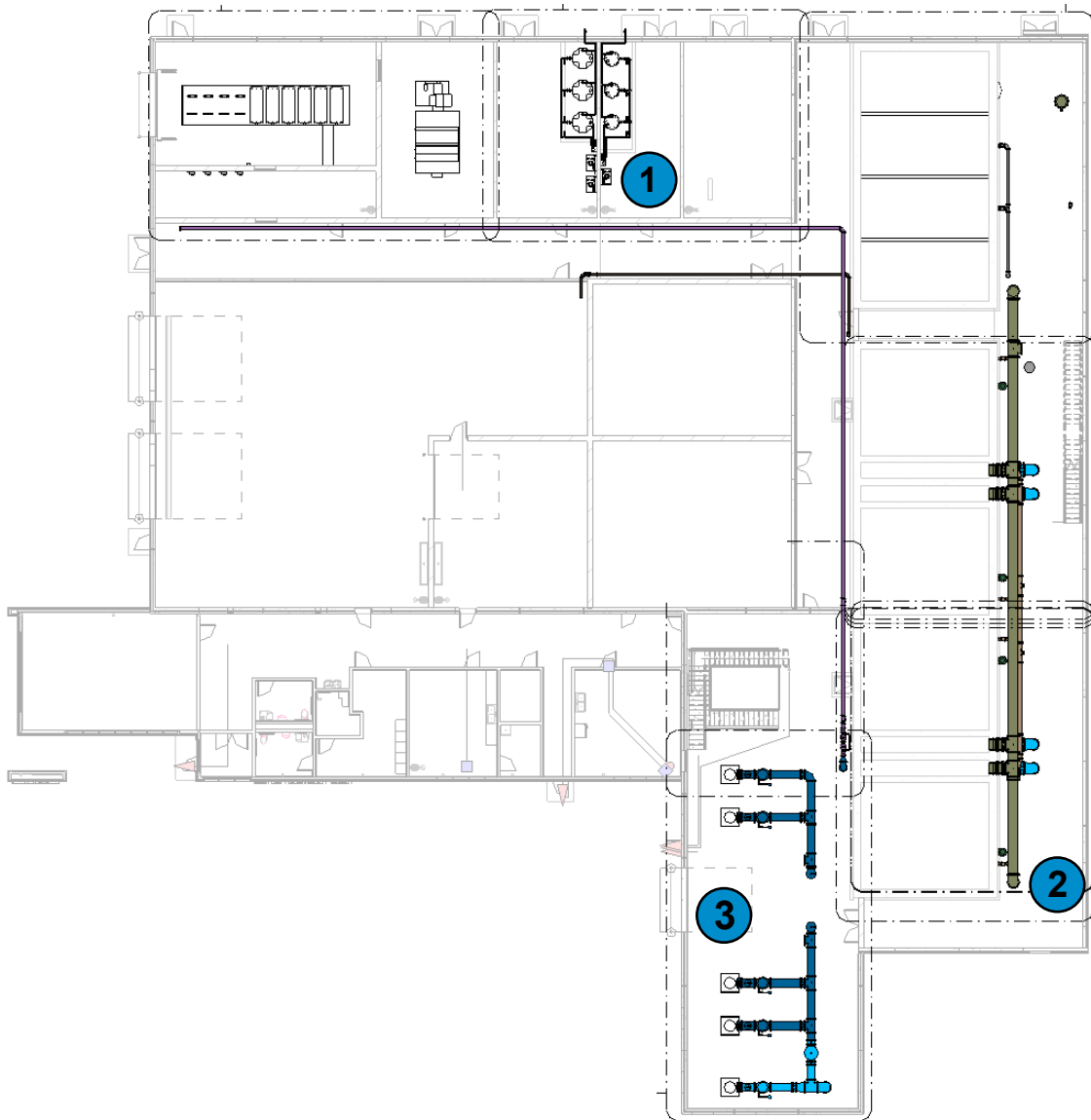
1



2



3



MAIN LEVEL - OVERALL PLAN